



CAAC Design and Construction Update

12-15-2022



2022 Projects

New Buildings & Additions

Jeffco Open - Auditorium Addition HCM - Bassett

Construction



Jeffco Open - Auditorium Addition HCM - Bassett

Construction



Jeffco Open - Auditorium Addition HCM - Bassett

Construction



Jeffco Open - Auditorium Addition HCM - Bassett

Construction



Prospect Valley ES - Replacement MOA – GH Phipps

Construction
Move-In Jan 5 2023



Beginning A New Chapter

Prospect Valley Ribbon Cutting & Open House January 5th - 5:30-7:00 p.m.

JOIN US at 5:30 p.m. FOR A SPECIAL CEREMONY AND THEN A CHANCE TO TOUR OUR
AMAZING NEW BUILDING!

All are welcome! We can't wait to see you there!



Refreshments provided by our PTA!

NO RSVP necessary.

Call the Prospect Valley office with questions!

303-982-7535

Prospect Valley ES - Replacement MOA – GH Phipps

Construction



Prospect Valley ES - Replacement MOA – GH Phipps

Construction



Standley Lake HS – Aux Gym Addition Cannon – FCI Constructors

Construction



Standley Lake HS - Aux Gym Addition Cannon – FCI Constructors

Construction



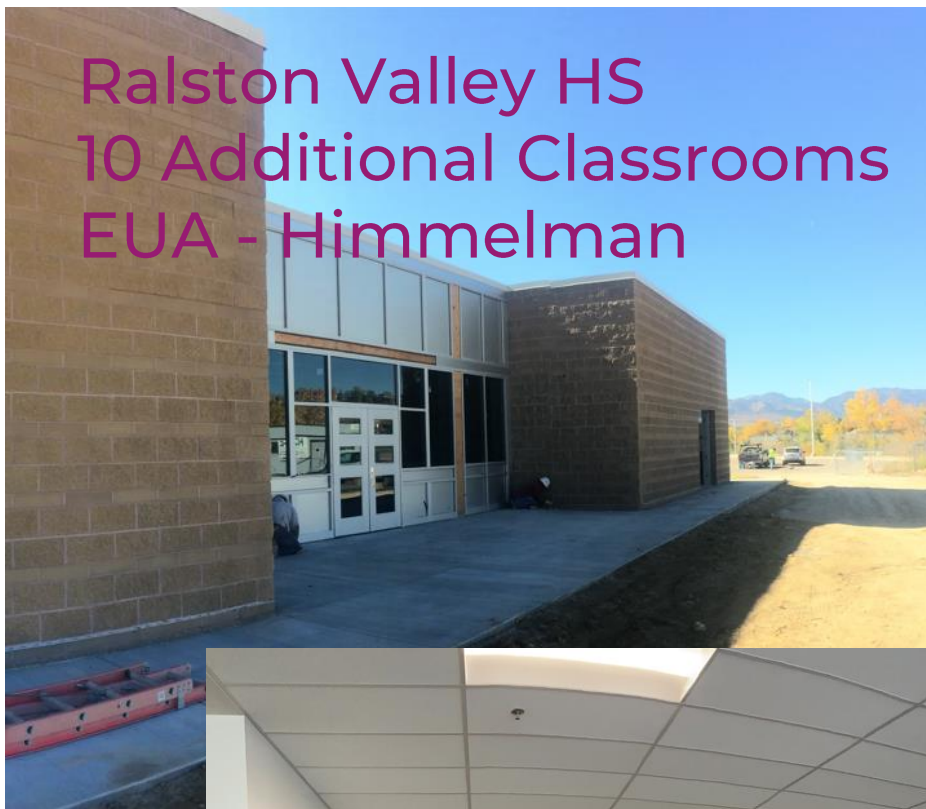
Ralston Valley HS 10 Additional Classrooms EUA - Himmelman



Ralston Valley HS 10 Additional Classrooms EUA - Himmelman



Ralston Valley HS
10 Additional Classrooms
EUA - Himmelman



Ralston Valley HS
10 Additional Classrooms
EUA - Himmelman



Efficiency Future Ready
Windy Peak OEL
HCM – Bryan

Construction



Efficiency Future Ready Windy Peak OEL HCM – Bryan

Construction



Efficiency Future Ready
Mount Evans OEL

Construction

HCM – GH Phipps



Efficiency Future Ready Mount Evans OEL HCM – GH Phipps

Construction



DW LED 2022

Ackerman – CMGC McKinstry



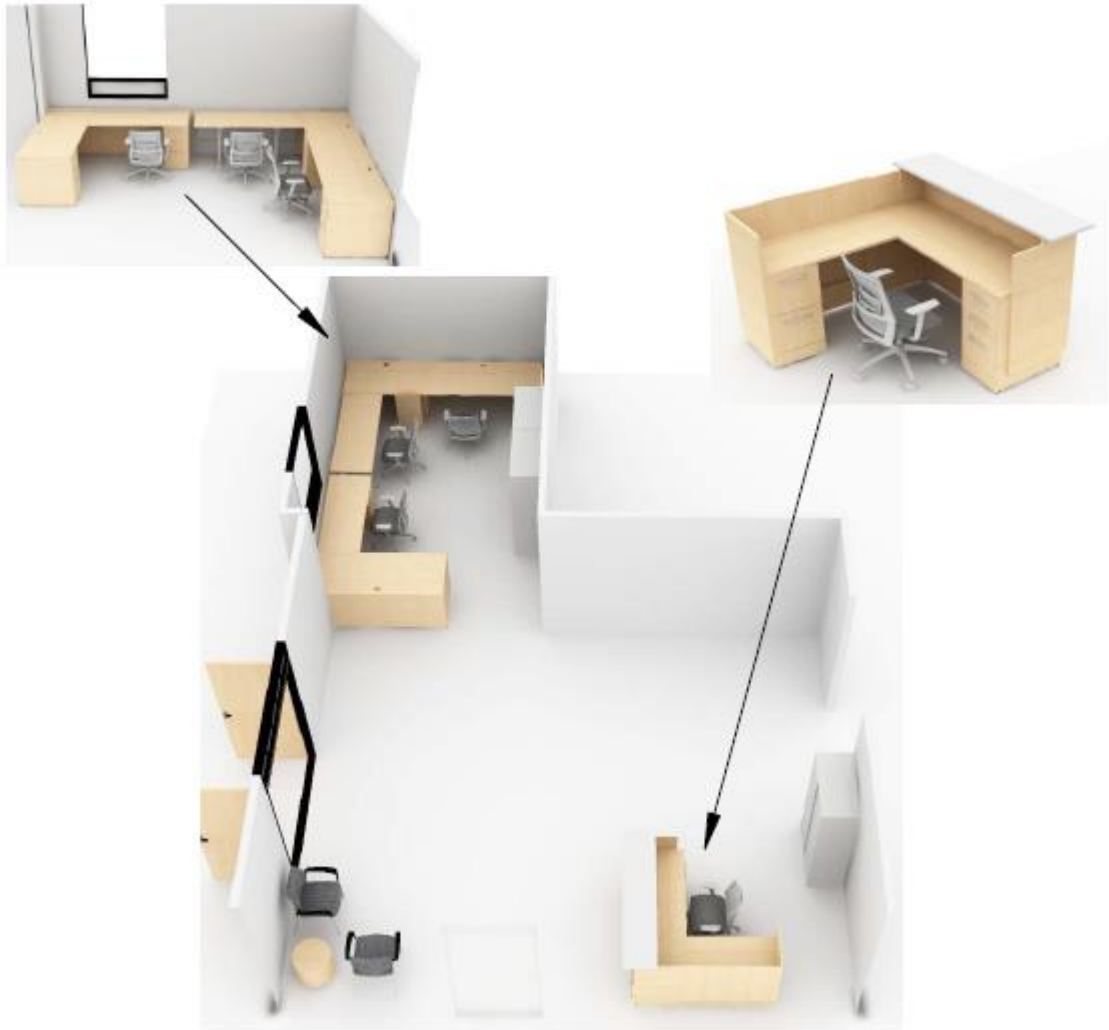
Construction

1. Brady
2. Bradford North
3. Bradford South
4. Ute Meadows ES
5. Leawood ES
6. Normandy ES
7. Rooney Ranch ES
8. Creighton MS
9. Moore MS
10. Mandalay MS
11. Deer Creek MS
12. Lawrence
13. Weber ES
14. Meiklejohn
15. West Woods
16. Chatfield HS
17. Dakota Ridge HS

2023 Efficiency Future Ready & DW projects

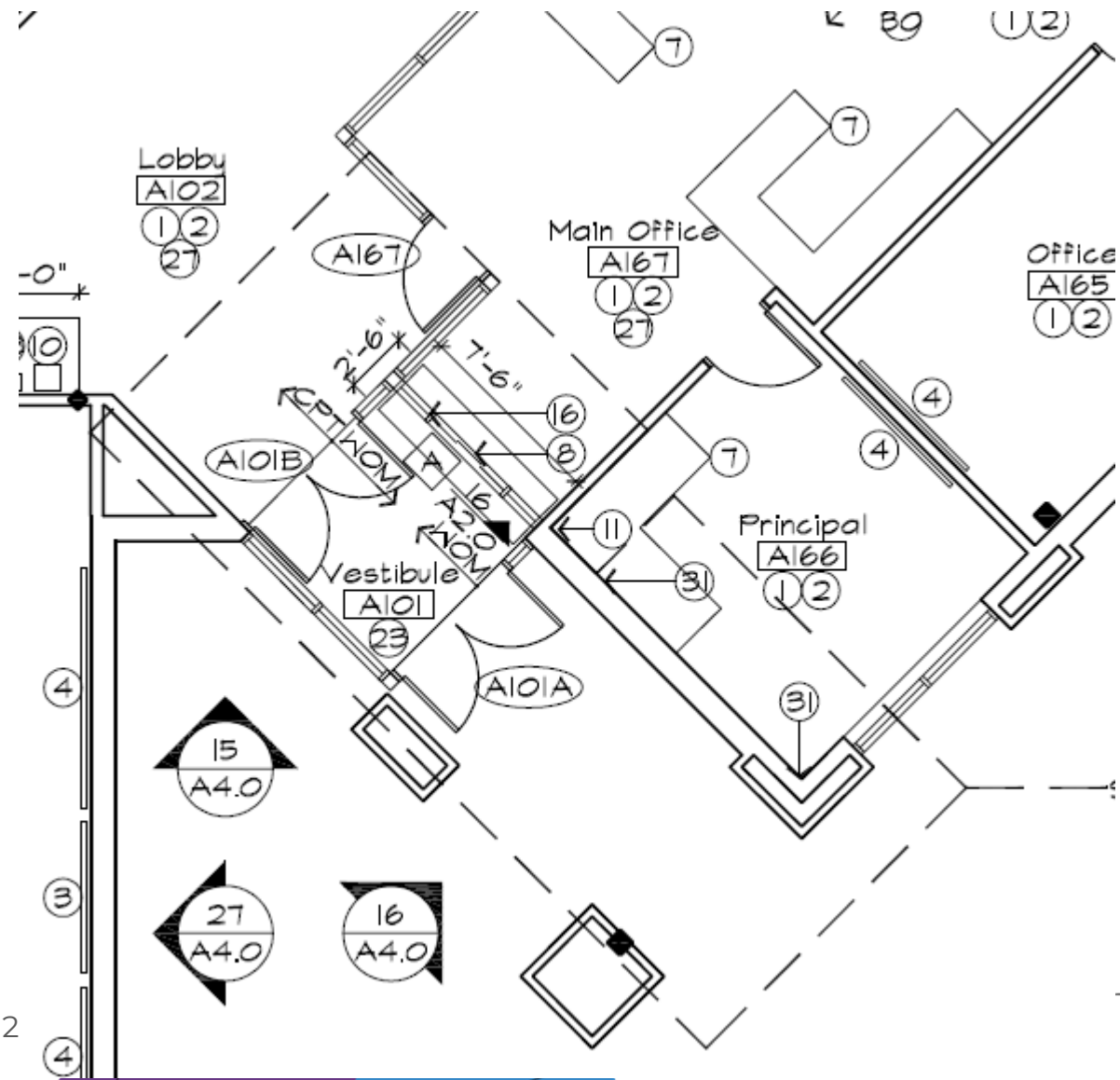
Blue Heron ES – Efficiency Future Ready MOA – Crossland

Construction



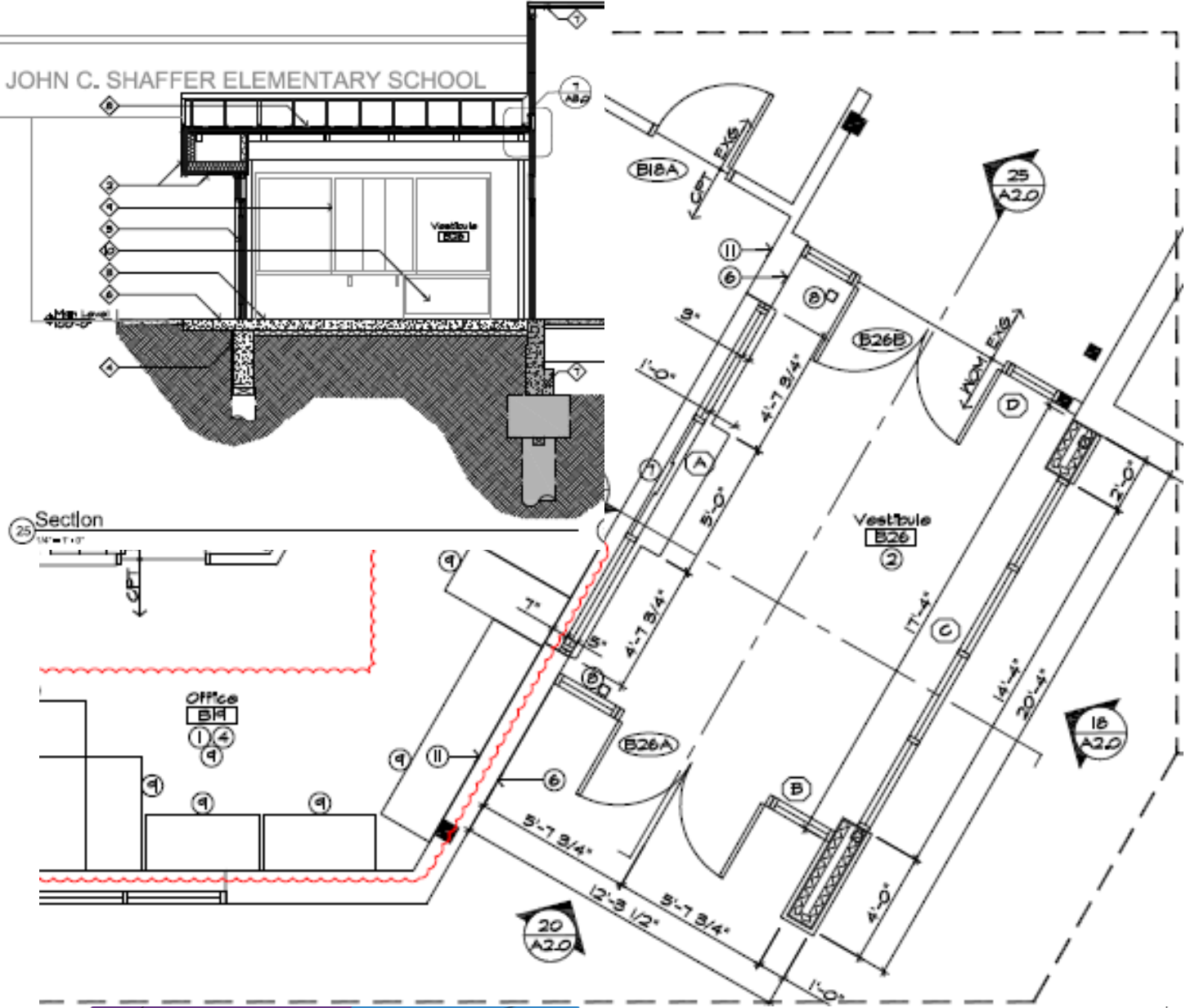
Mortensen ES – Efficiency Future Ready DLH – Crossland

Construction



Shaffer ES – Efficiency Future Ready DLH – Crossland

Construction



Efficiency Future Ready Wheat Ridge HS Eidos – GTC

VOTE REQUIRED
Exceeds \$500k
above budget

Bid 11/18/22

Alt 7 - Aux Gym
Facade Branding
\$71,800

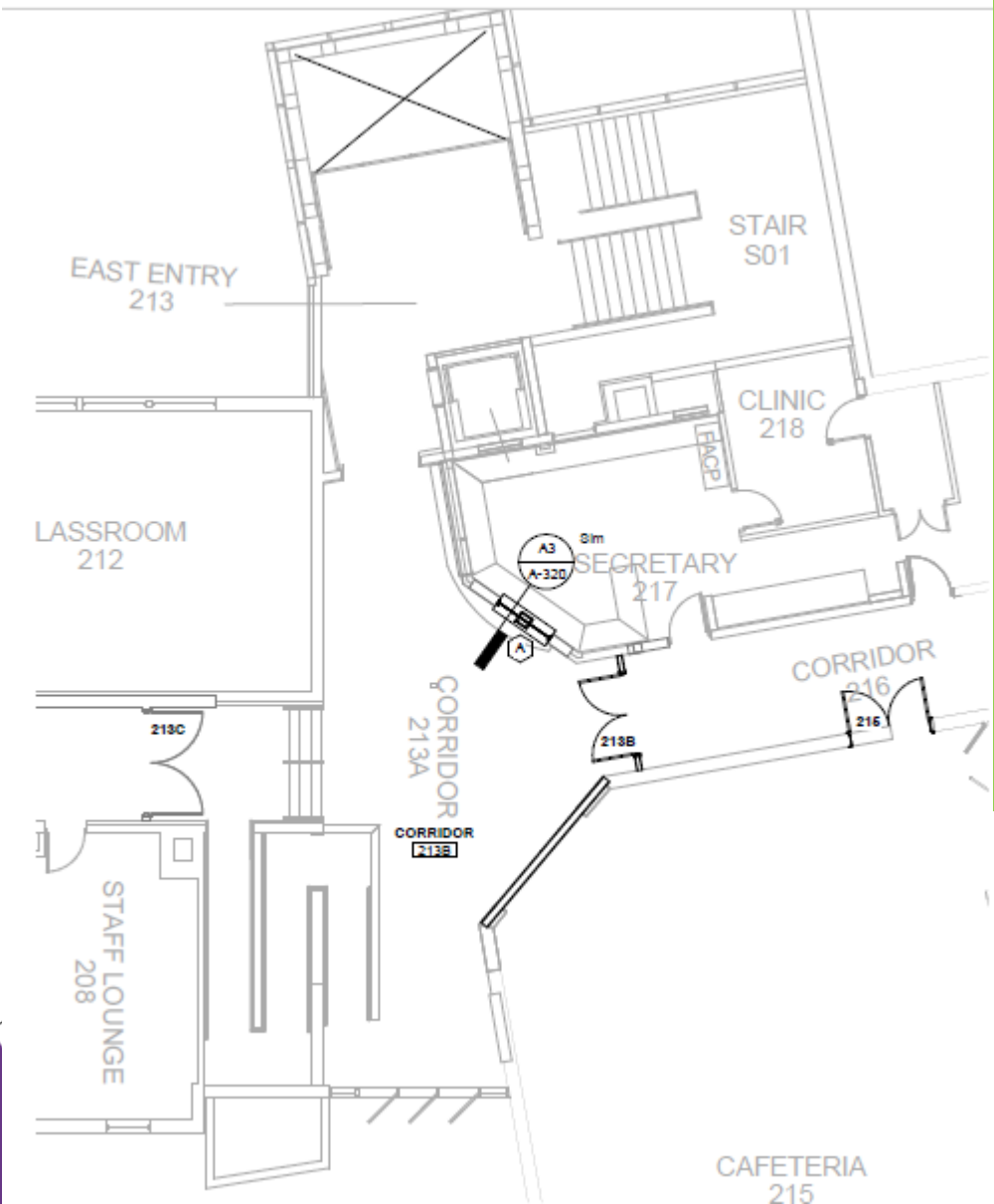
Alt 14 - Admin
Facade Branding
\$99,600

Total
\$10,437,100

Budget
\$9,864,944

\$572,156
Above Budget

Edgewater ES – Efficiency Future Ready HCM – PG Arnold



Bid 11/17/22

\$535,000

Budget
\$3,400,798

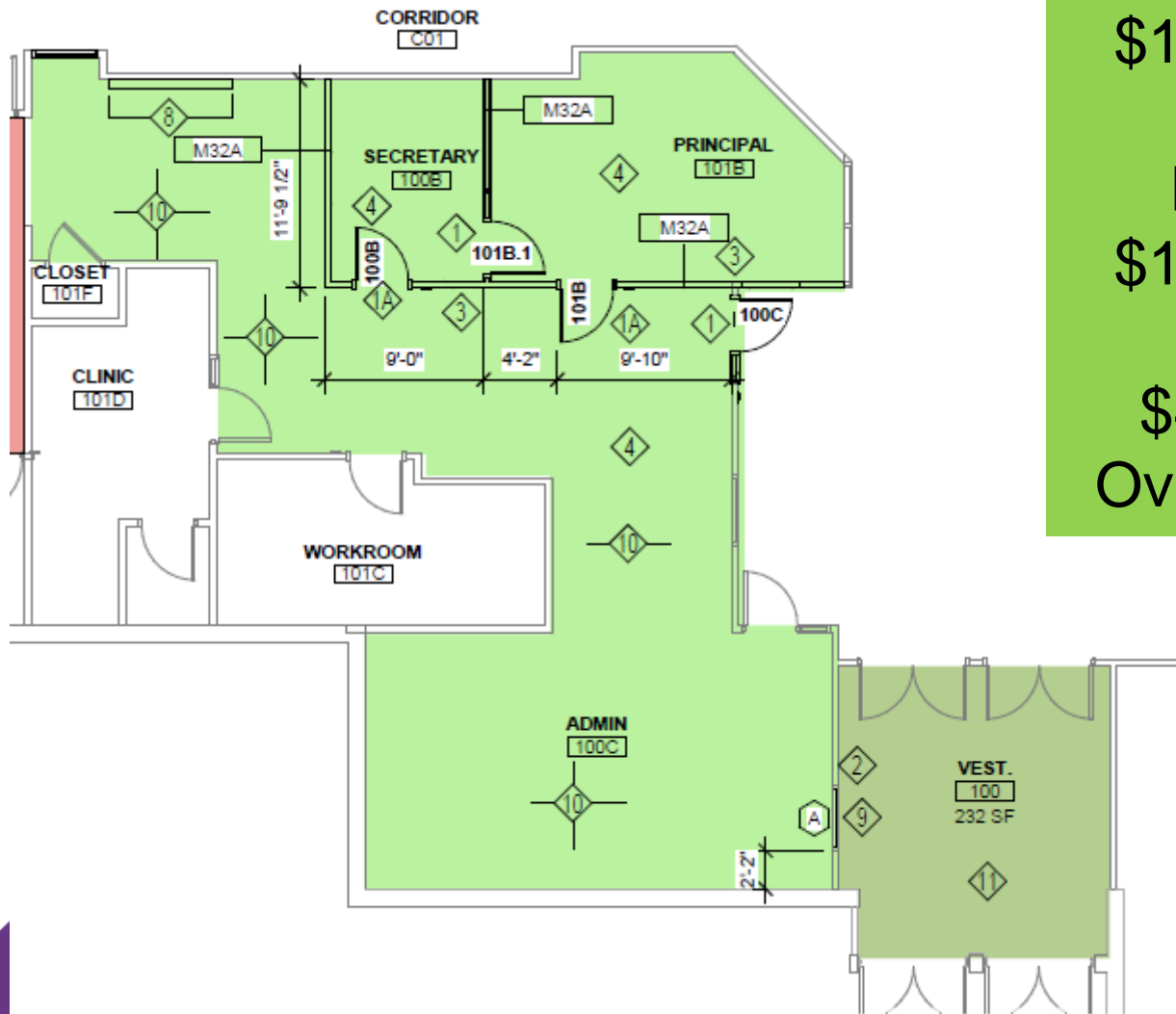
\$2,865,798
Under Budget

\$184,602 from addition
portion of budget



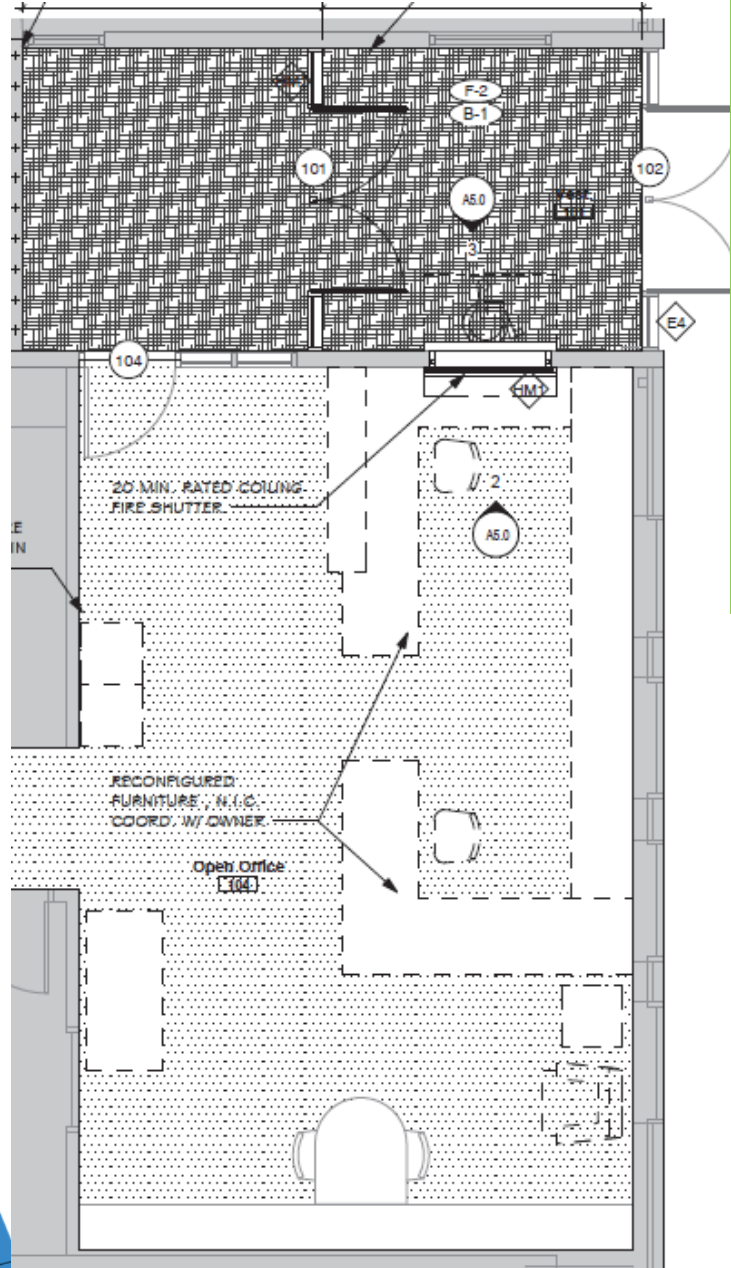
Ken Caryl MS – Efficiency Future Ready HCM – PG Arnold

Bid 11/17/22
\$1,606,000
Budget
\$1,145,296
\$460,704
Over Budget



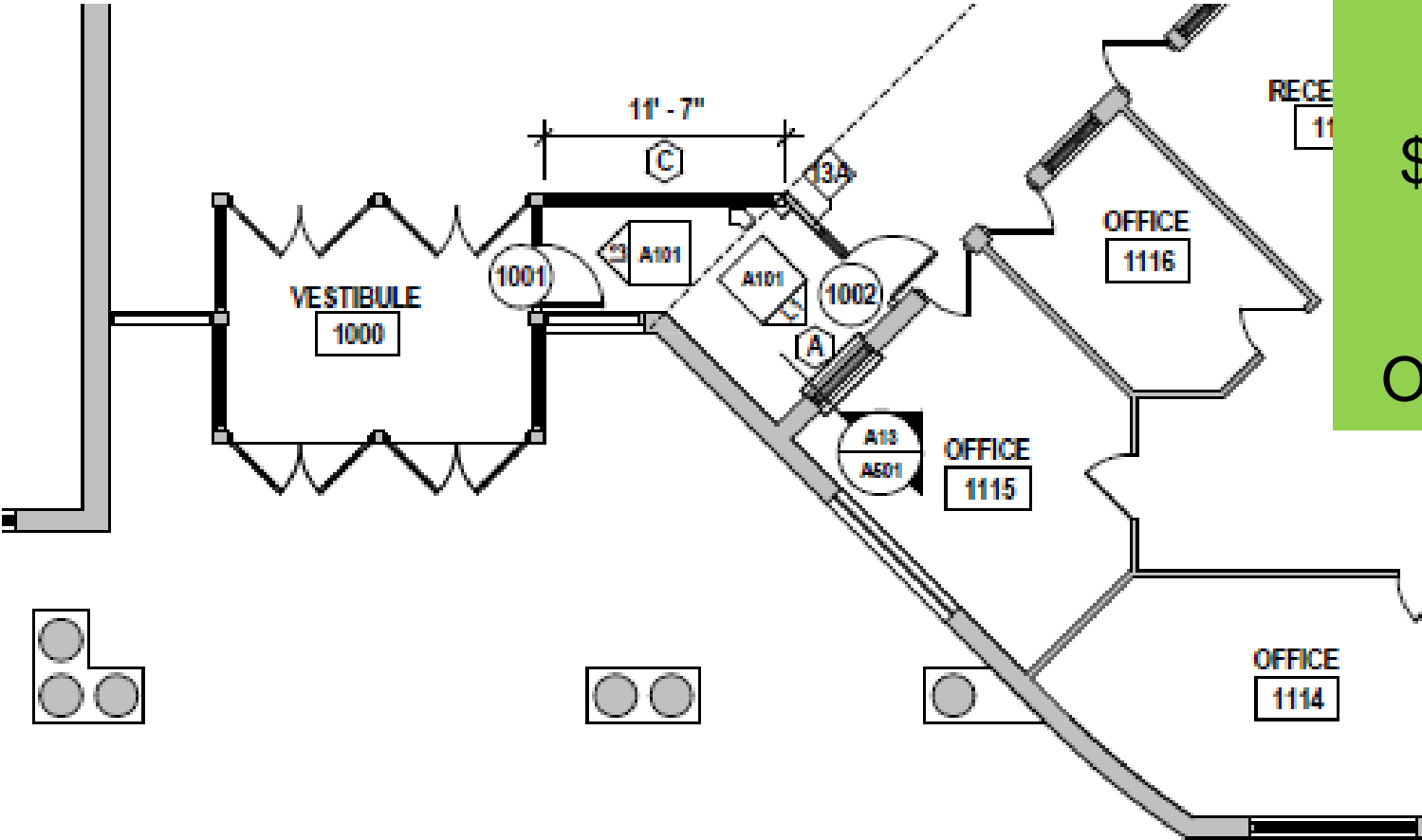
Mt Carbon – Efficiency Future Ready Eidos – Single Track

Bid 12/2/22
\$521,213
Budget
\$304,778
\$216,435
Over Budget



Summit Ridge MS – Efficiency Future Ready H&M – GTC

Bid 12/2/22
\$1,179,200
Budget
\$1,029,368
\$149,832
Over Budget



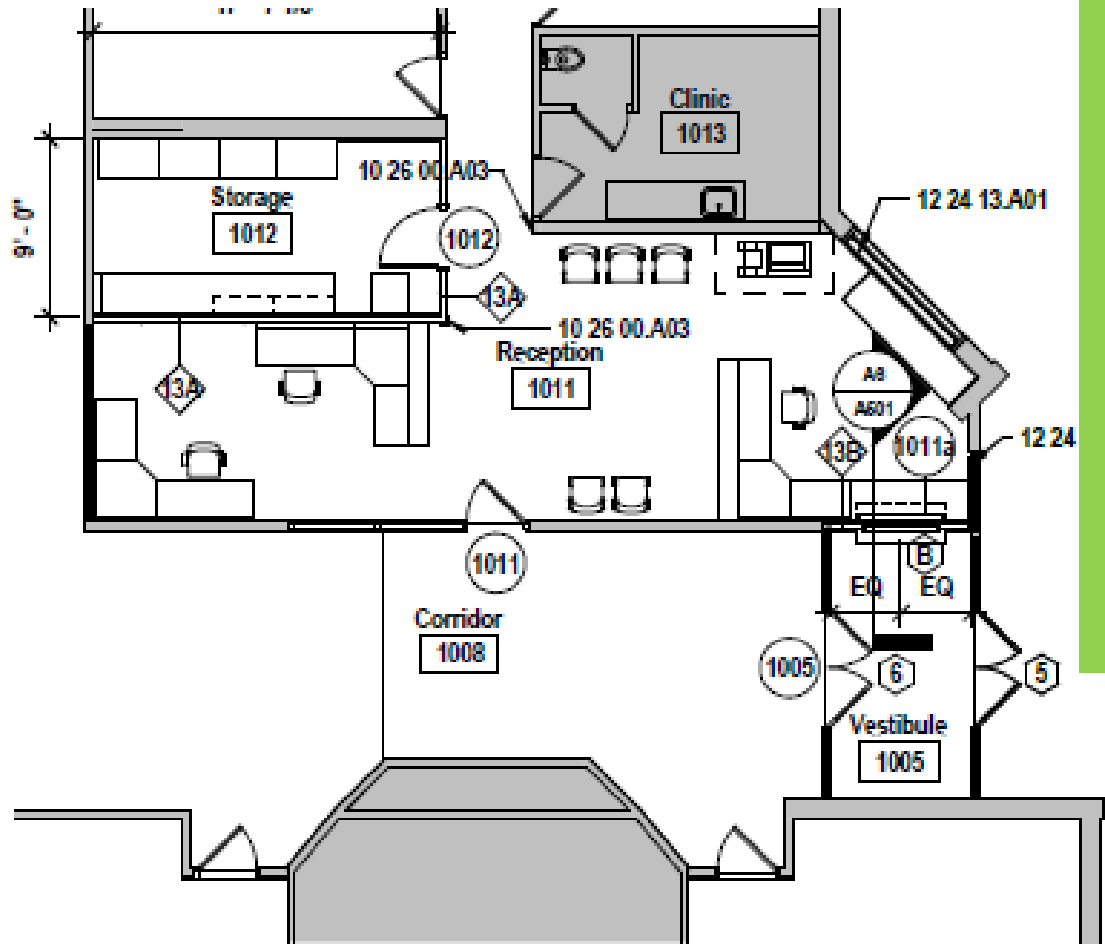
Kendallvue ES – Efficiency Future Ready H&M – GTC

Bid 12/5/22
\$1,194,500

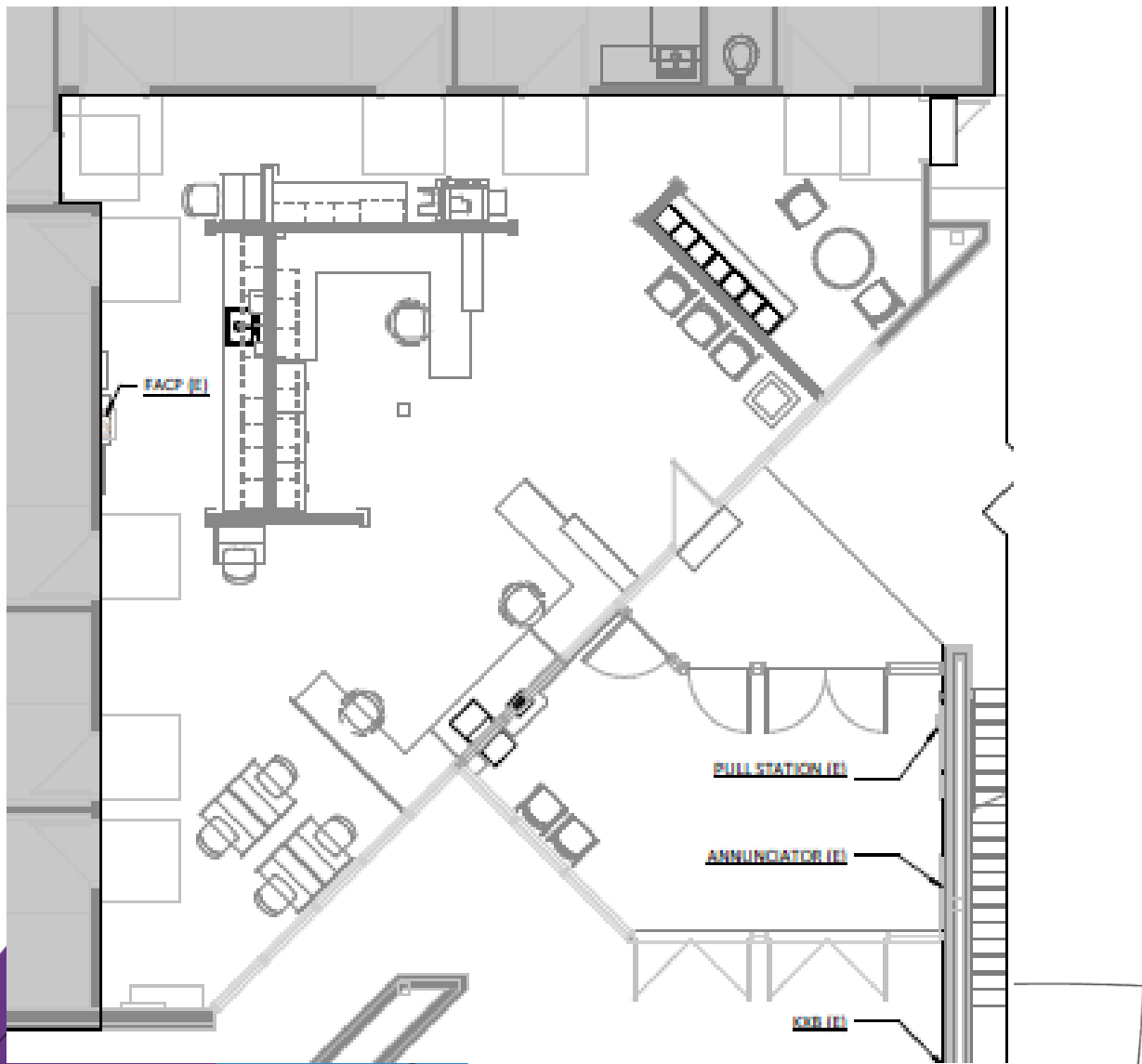
Budget
\$1,075,476

\$119,024
Over Budget

\$187,200 of Bid was for
ROFTS Scope



Deer Creek MS
Efficiency Future Ready
RB+B – GTC



Bid 12/6/22

On 1/19/23 BOE
Consent Agenda

\$521,700

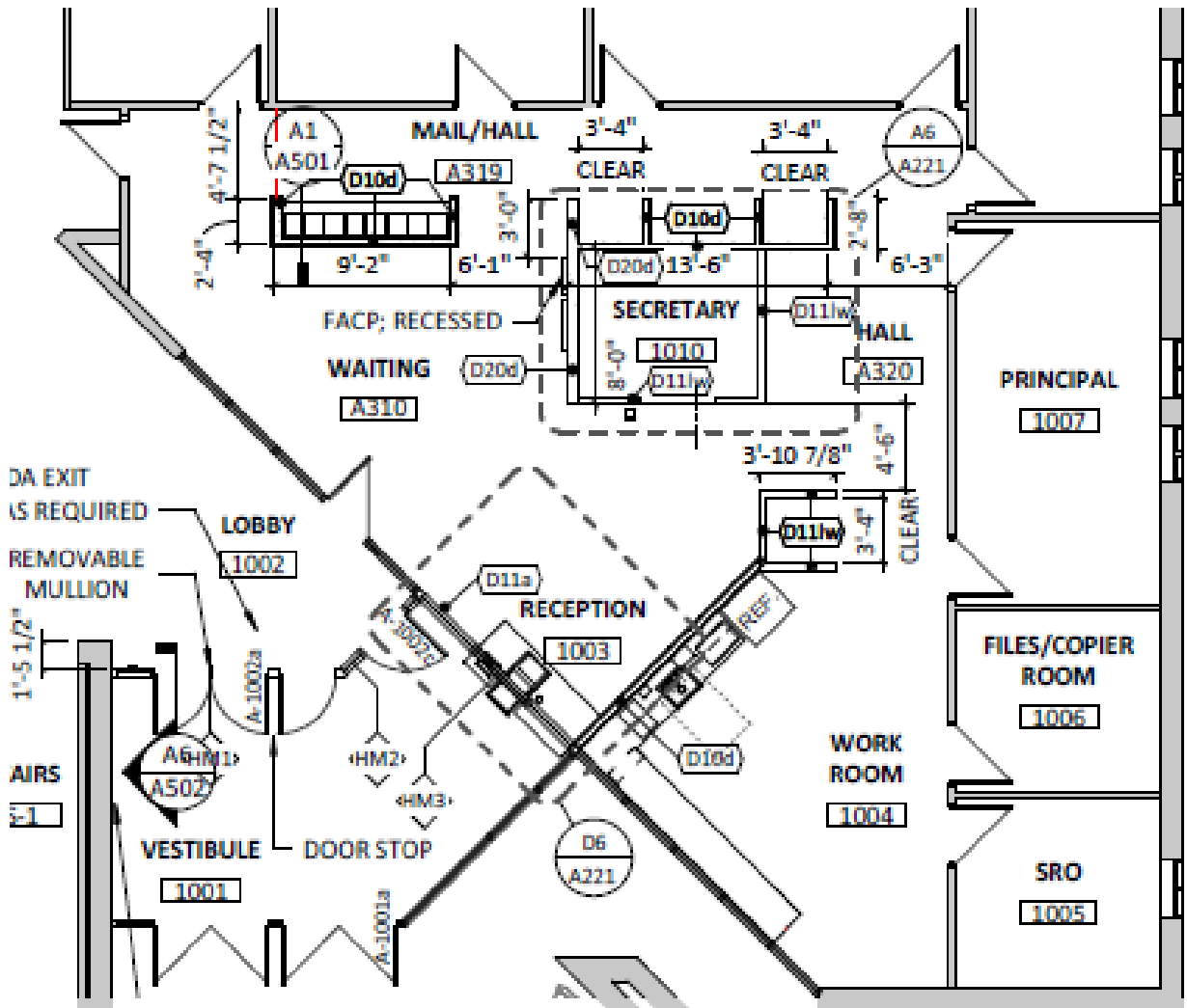
Budget
\$317,276

\$204,424
Over Budget

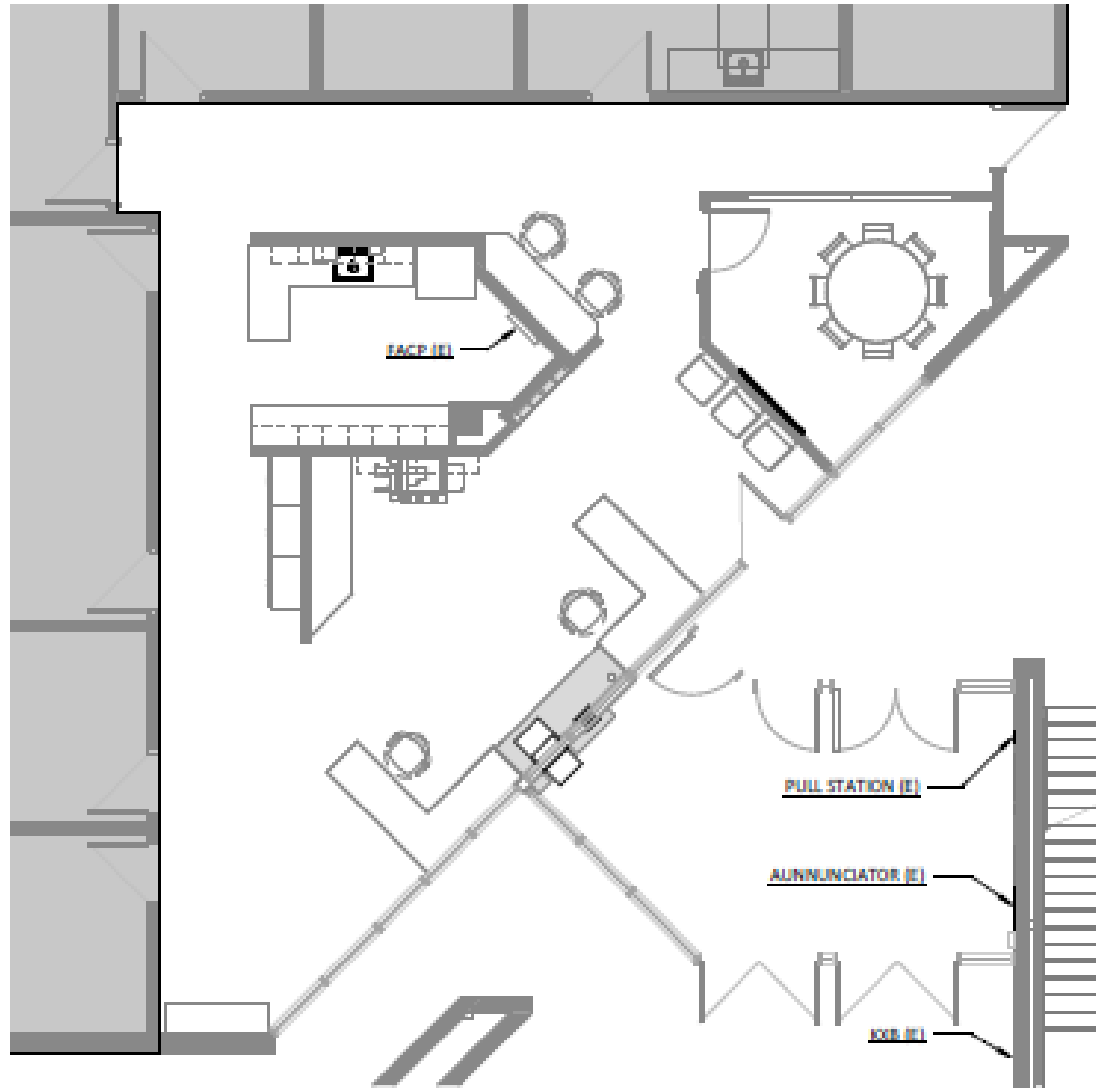


Mandalay MS
 Efficiency Future Ready
 RB+B – GTC

Bid 12/6/22
 \$595,700
 Budget
 \$421,323
 \$174,377
 Over Budget



Moore MS, Efficiency Future Ready RB+B – GTC



MAIN ENTRY VESTIBULE AND ADMIN SUITE
RENOVATION. NO CHANGE TO FREE EGRESS.

Bid 12/6/22
\$1,272,200

Budget
\$925,804

\$346,396
Over Budget

\$279,500 Gym flooring
Alt.3



Warren Tech – Efficiency Future Ready HCM – PG Arnold

Bid 12/8/22
\$2,333,000

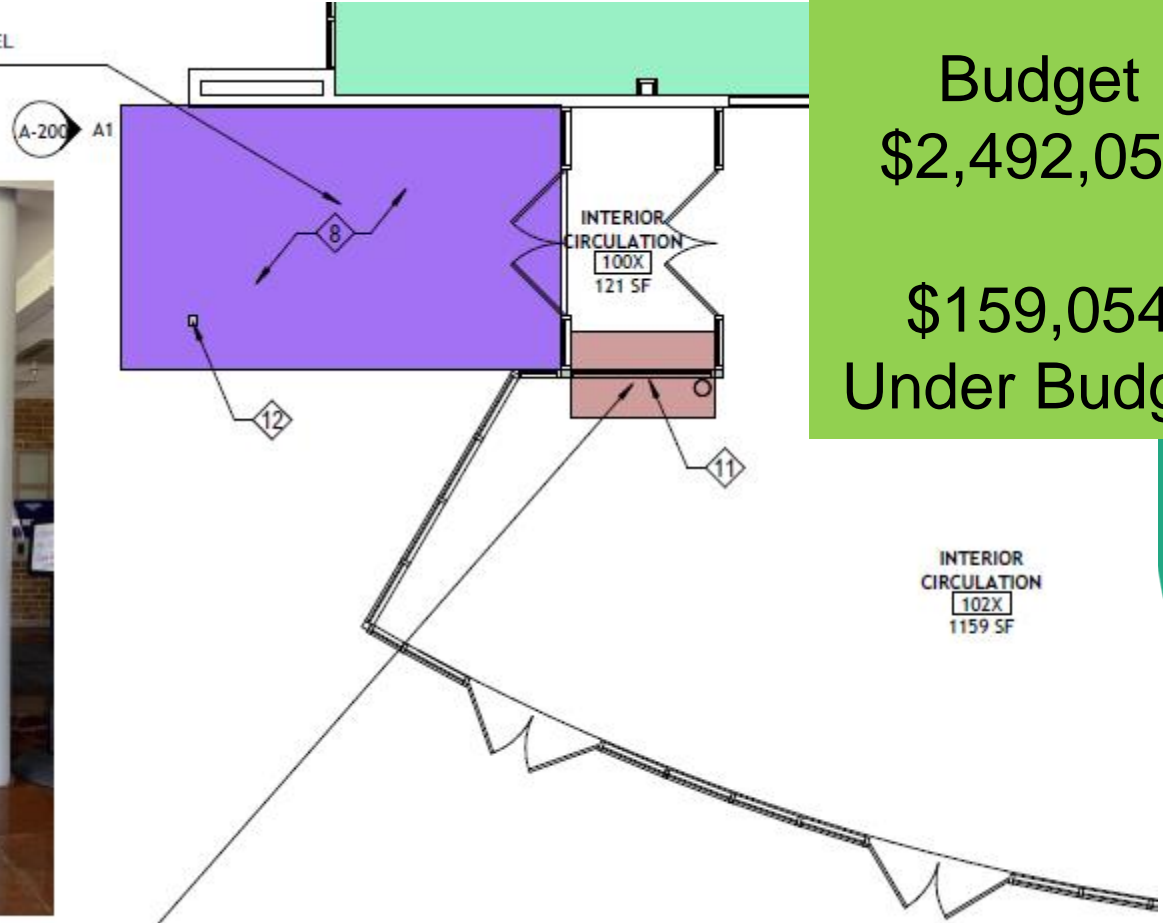
Budget
\$2,492,054

\$159,054
Under Budget

MODIFY EXISTING CANOPY TO PROVIDE
RECTANGULAR SHAPED CANOPY. ADD NEW STEEL
COLUMN AT NEW CORNER OF CANOPY.



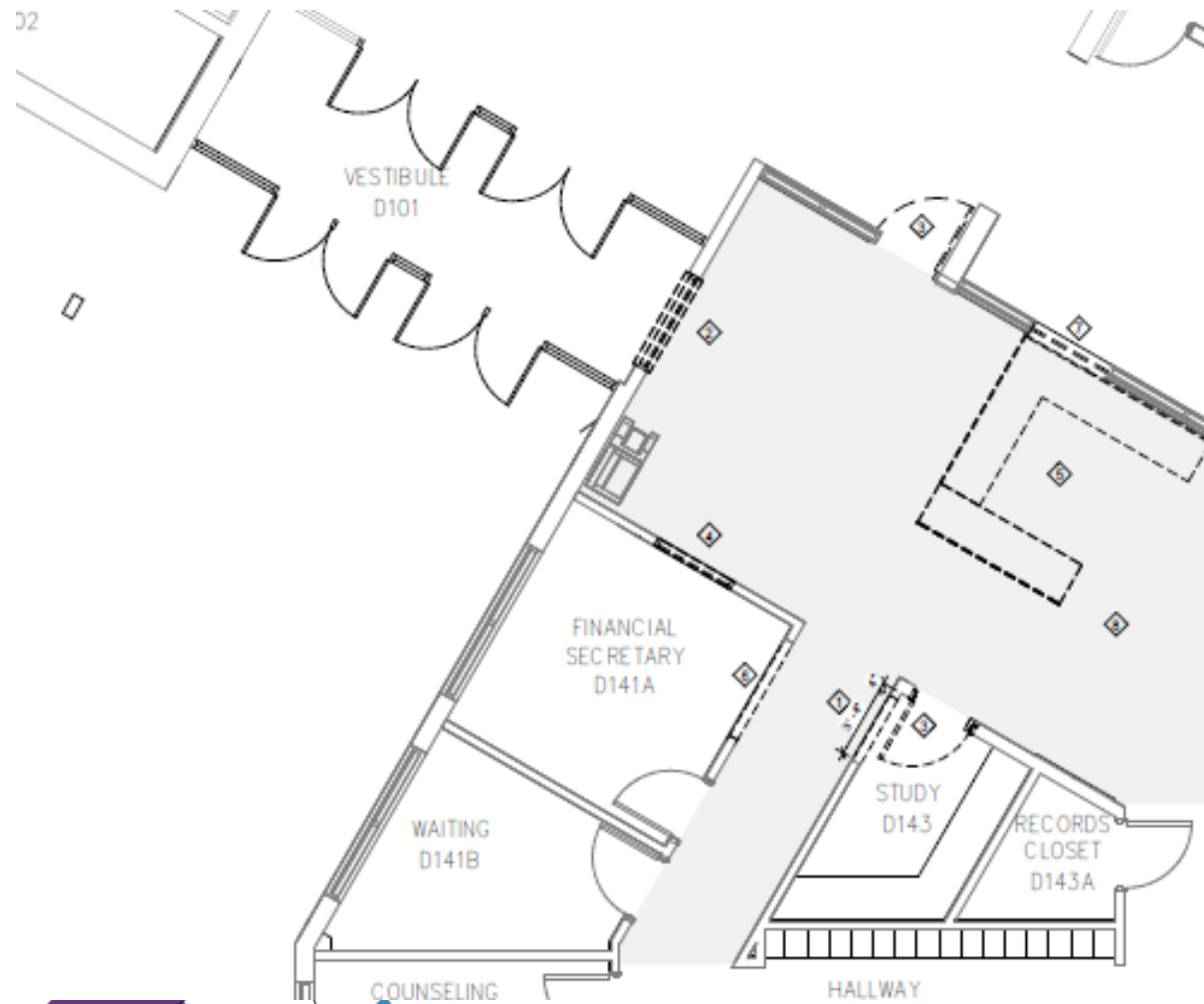
MODIFY EXISTING STOREFRONT AT INTERIOR
VESTIBULE TO INSTALL NEW SECURITY
TRANSACTION WINDOW



INTERIOR
CIRCULATION
102X
1159 SF



Dunstan MS – Efficiency Future Ready HCM – Single Track



Bid 12/8/22
\$896,946

Budget
\$411,740

\$485,206
Over Budget

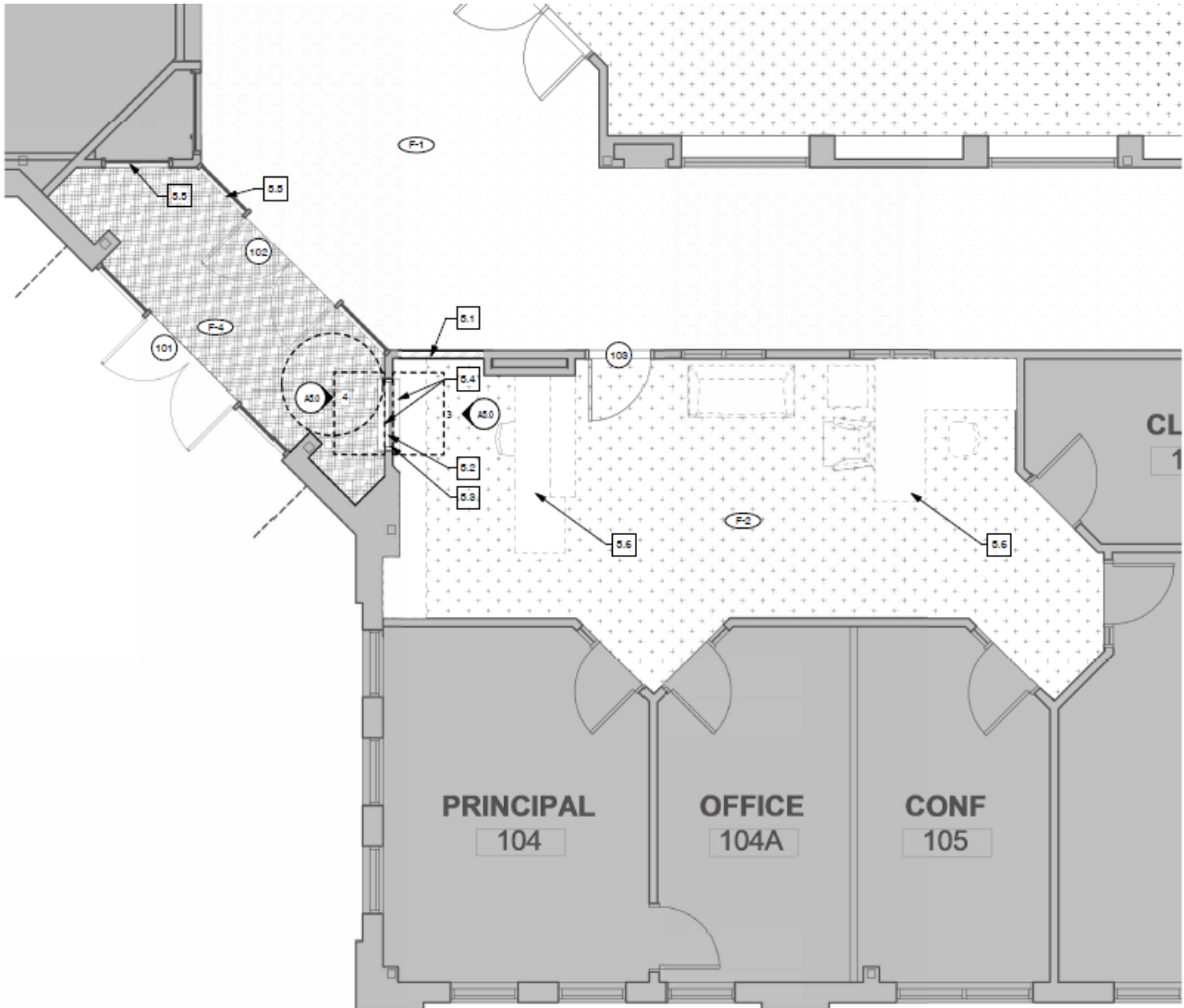
\$266,946 Alt.1
LED CR Lighting 2nd floor
Classrooms

Sobesky Academy – Efficiency Future Ready Eidos – TBD

Bid 12/14/22
\$556,500

Budget
\$401,823

\$154,677
Over Budget



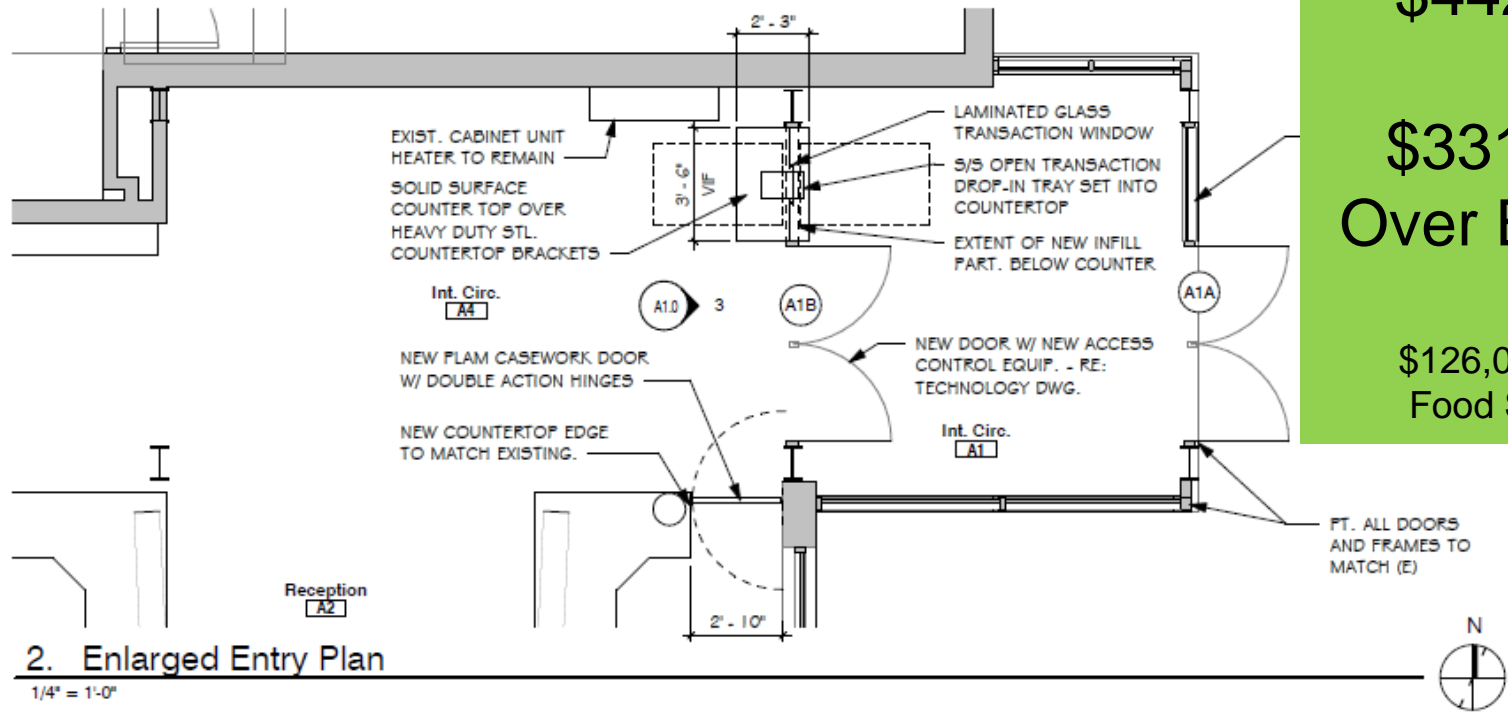
Pennington ES – Efficiency Future Ready Eidos – TBD

Bid 12/14/22
 \$774,500

Budget
 \$442,605

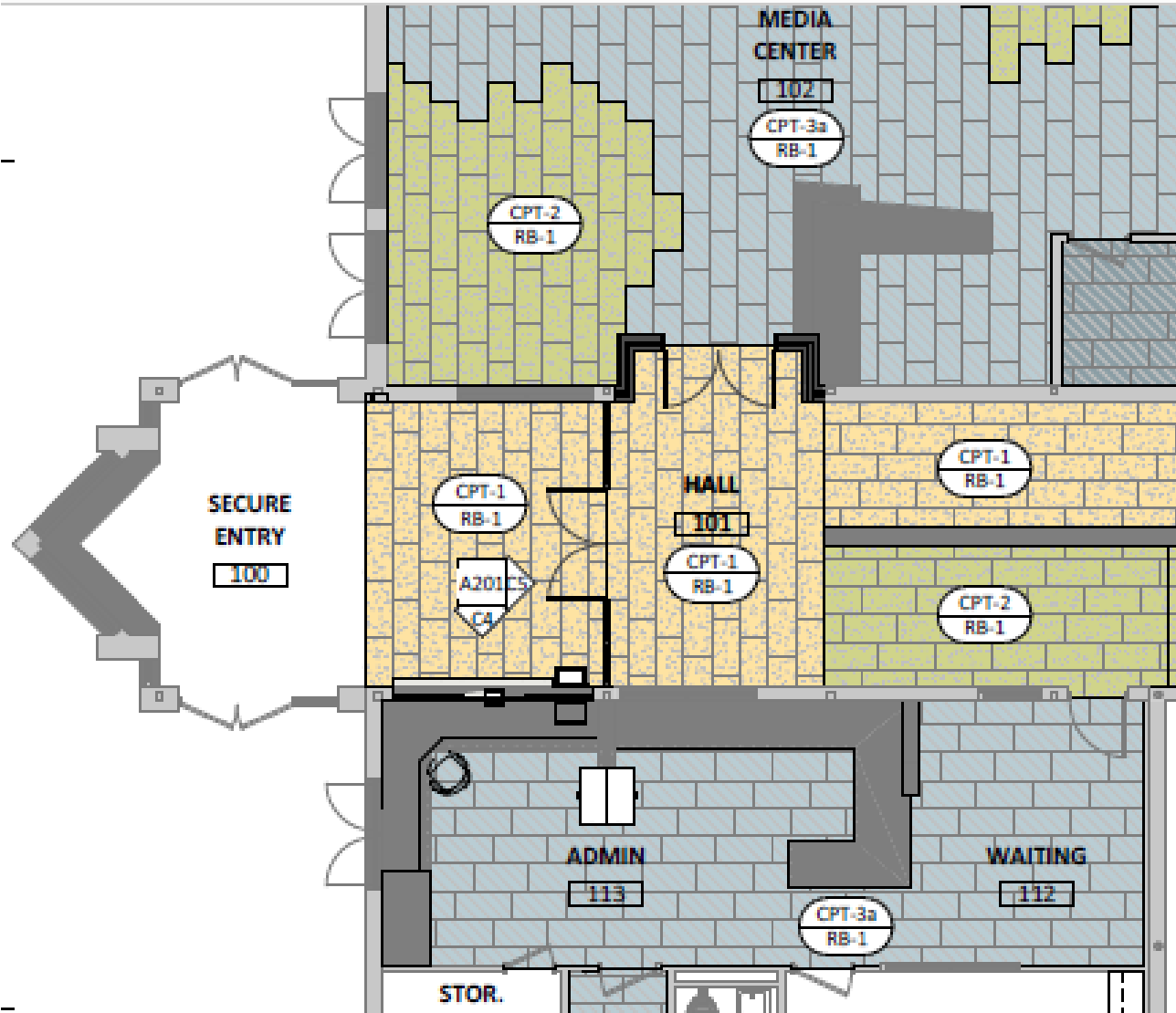
**\$331,895
 Over Budget**

\$126,000 Alt.1
 Food Service



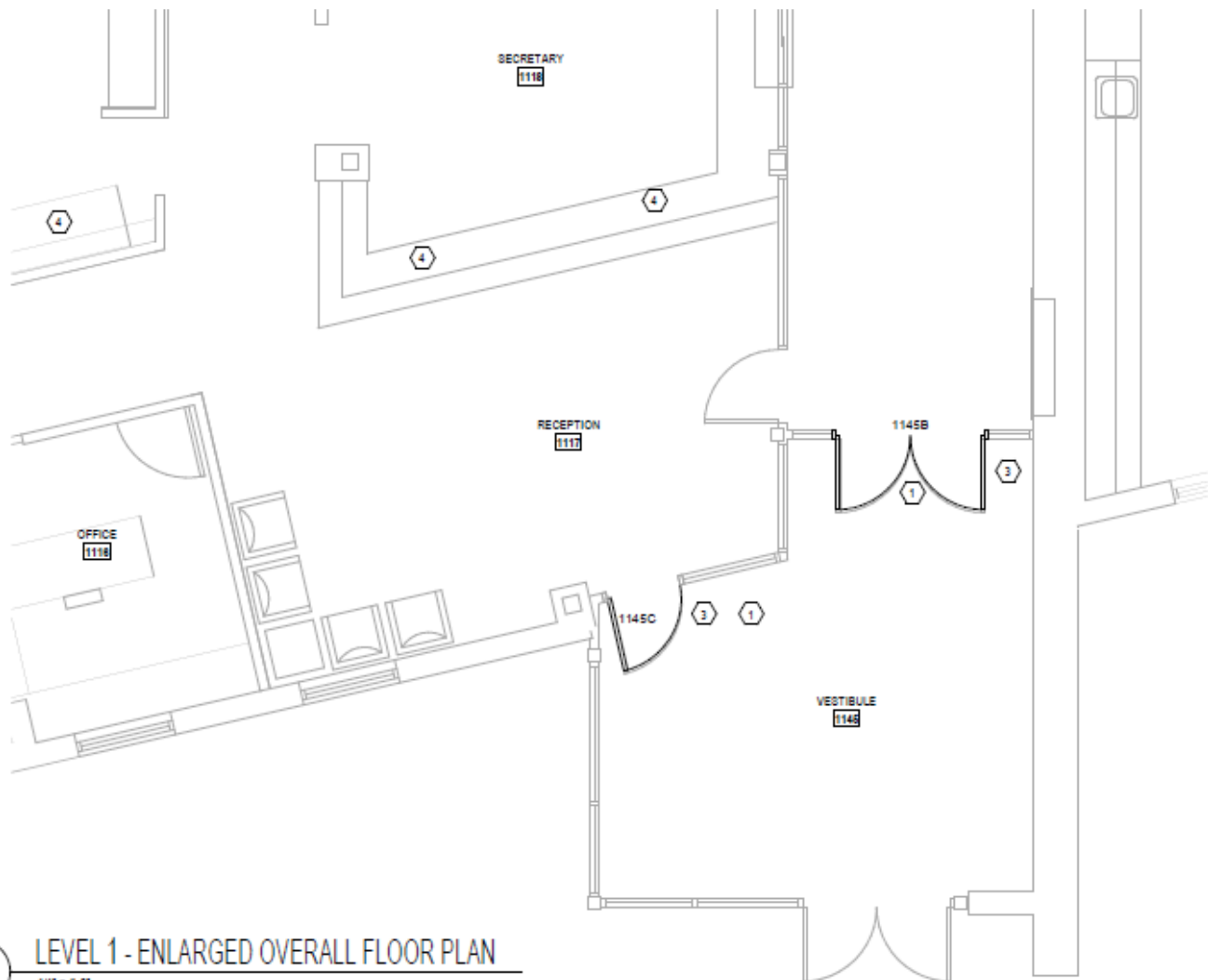
Coal Creek K8 – Efficiency Future Ready RB+B – TBD

Bids 12/20/22



Bear Creek K8 – Efficiency Future Ready MOA – TBD

Bids 1/13/23

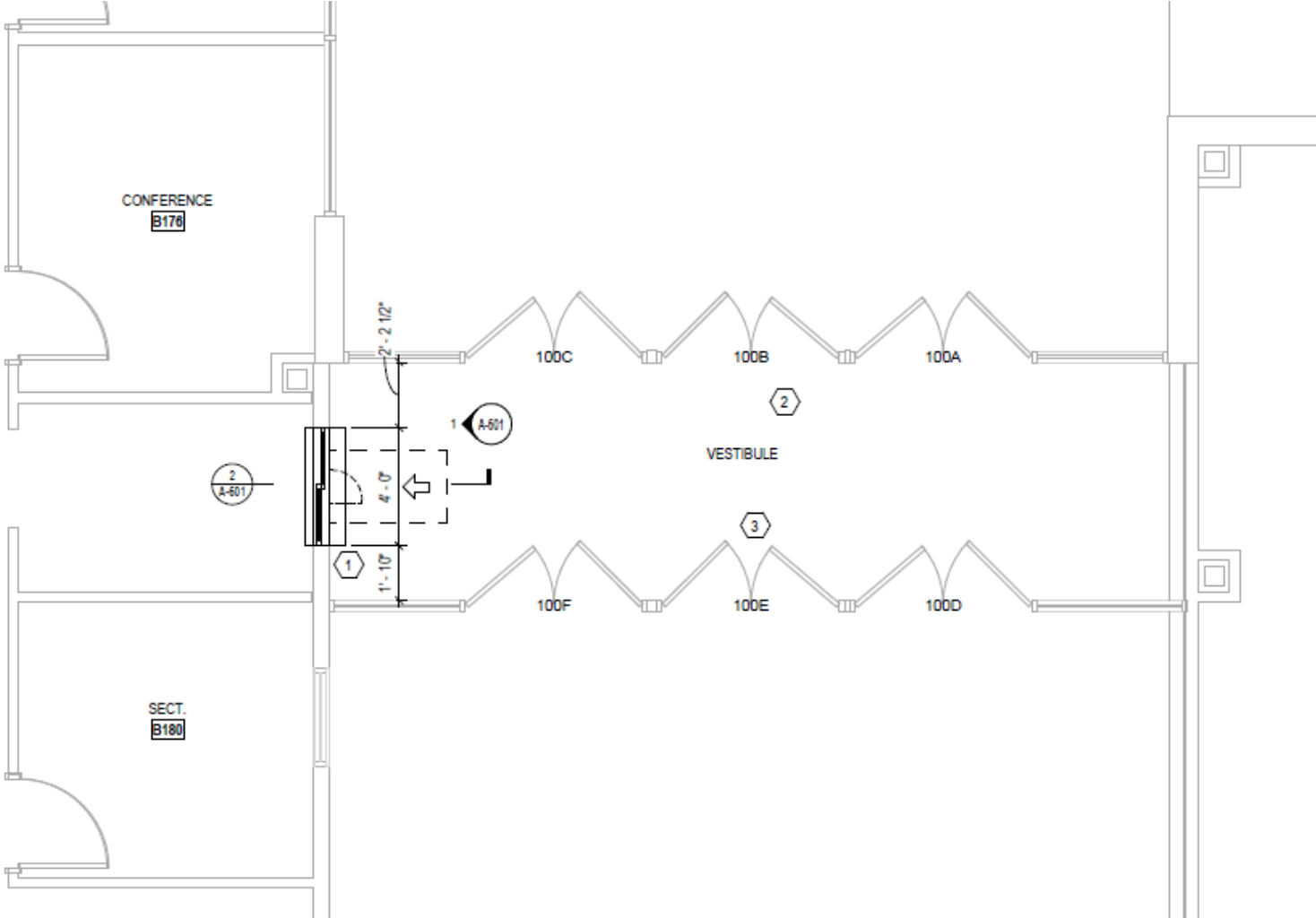


5 LEVEL 1 - ENLARGED OVERALL FLOOR PLAN
1/4" = 1'-0"



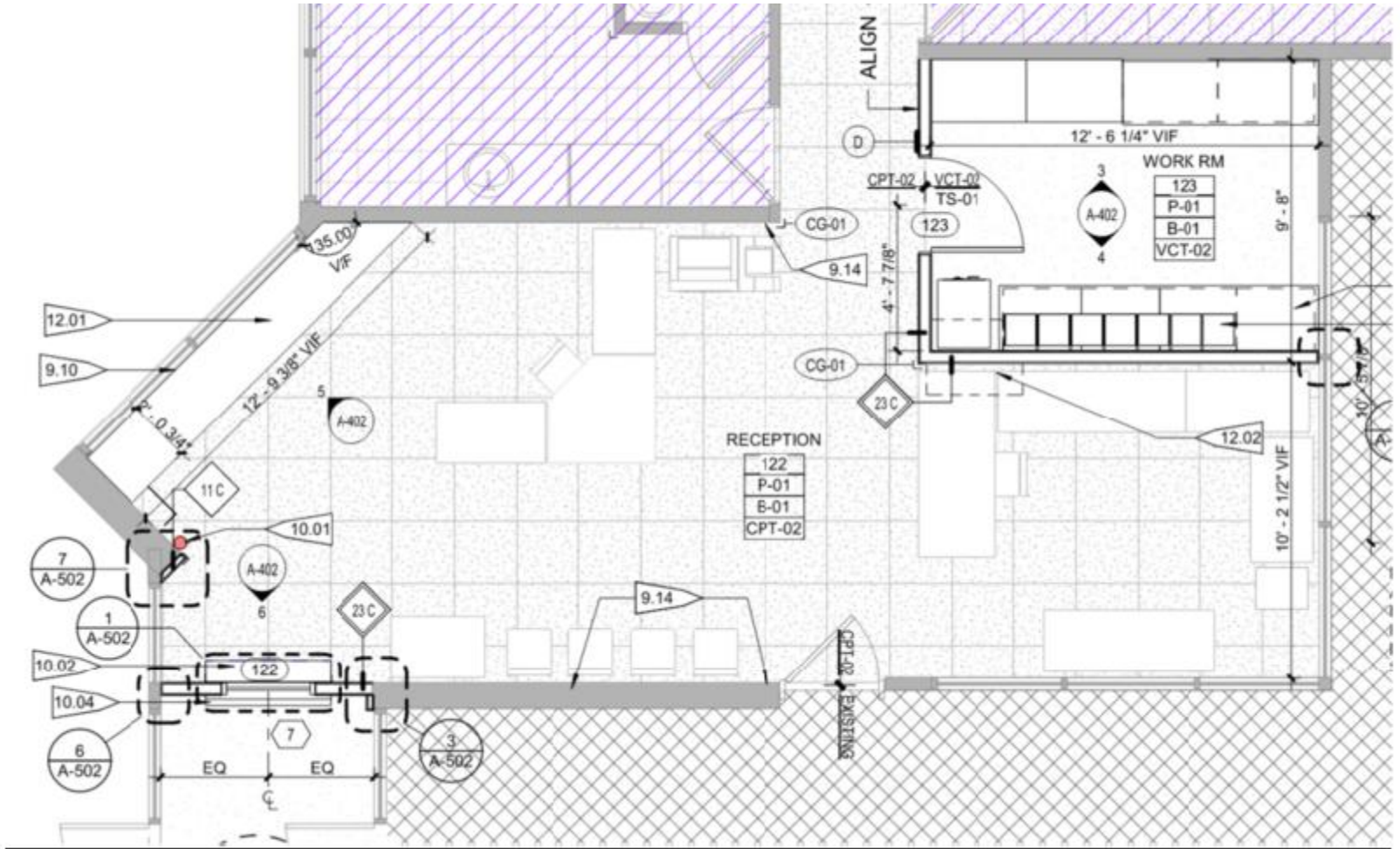
Falcon Bluffs MS – Efficiency Future Ready MOA – TBD

Bids 1/13/23



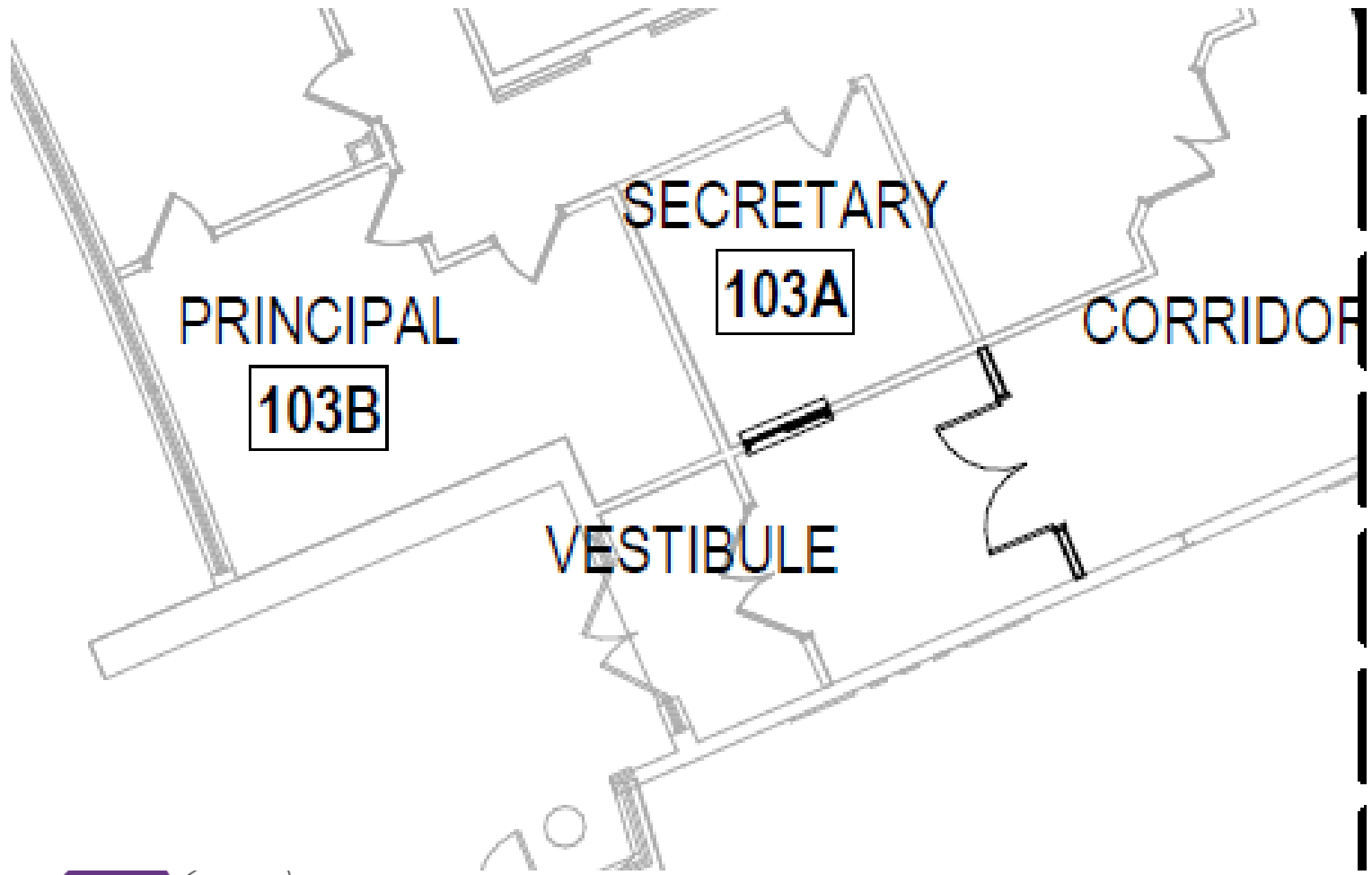
Governors Ranch – Efficiency Future Ready MOA – TBD

Bids 1/13/23



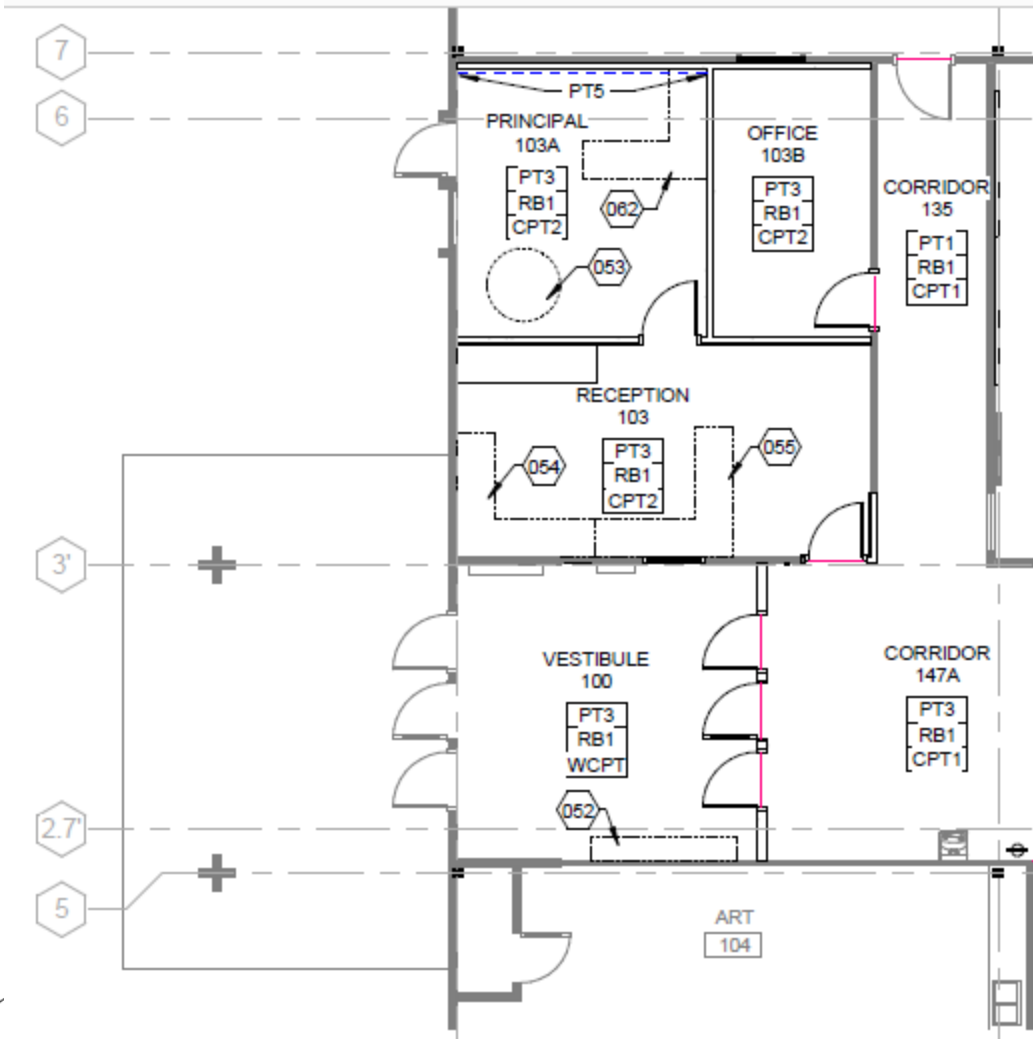
Drake MS – Efficiency Future Ready MOA – TBD

Bids 1/15/22



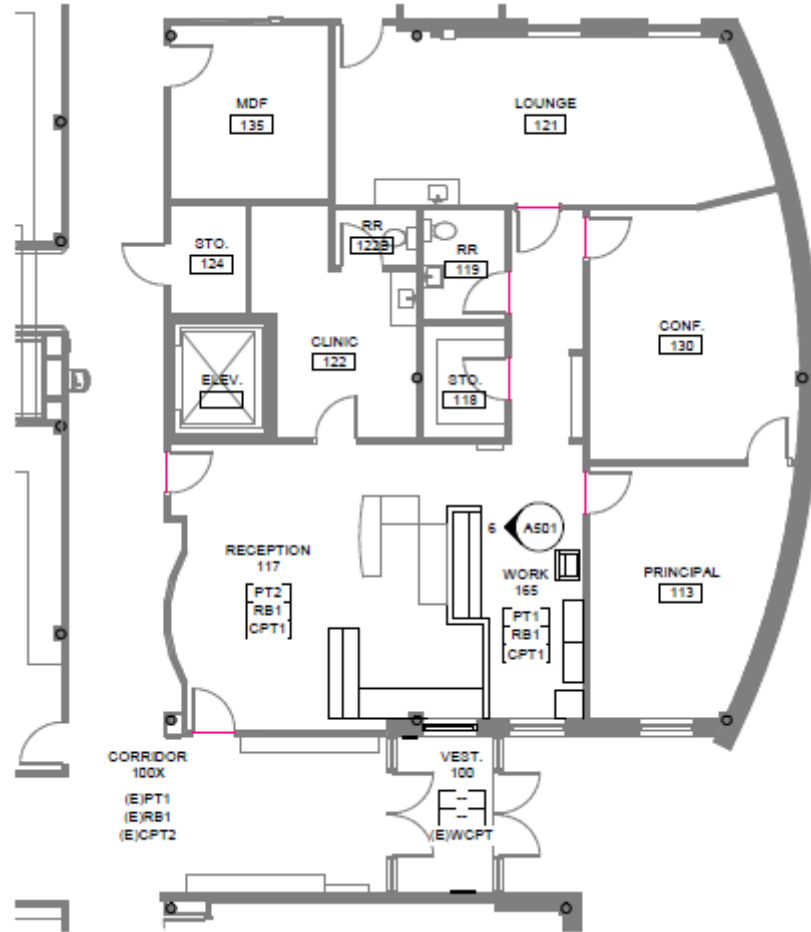
Little ES – Efficiency Future Ready Treanor HL – TBD

Bids 1/18/22



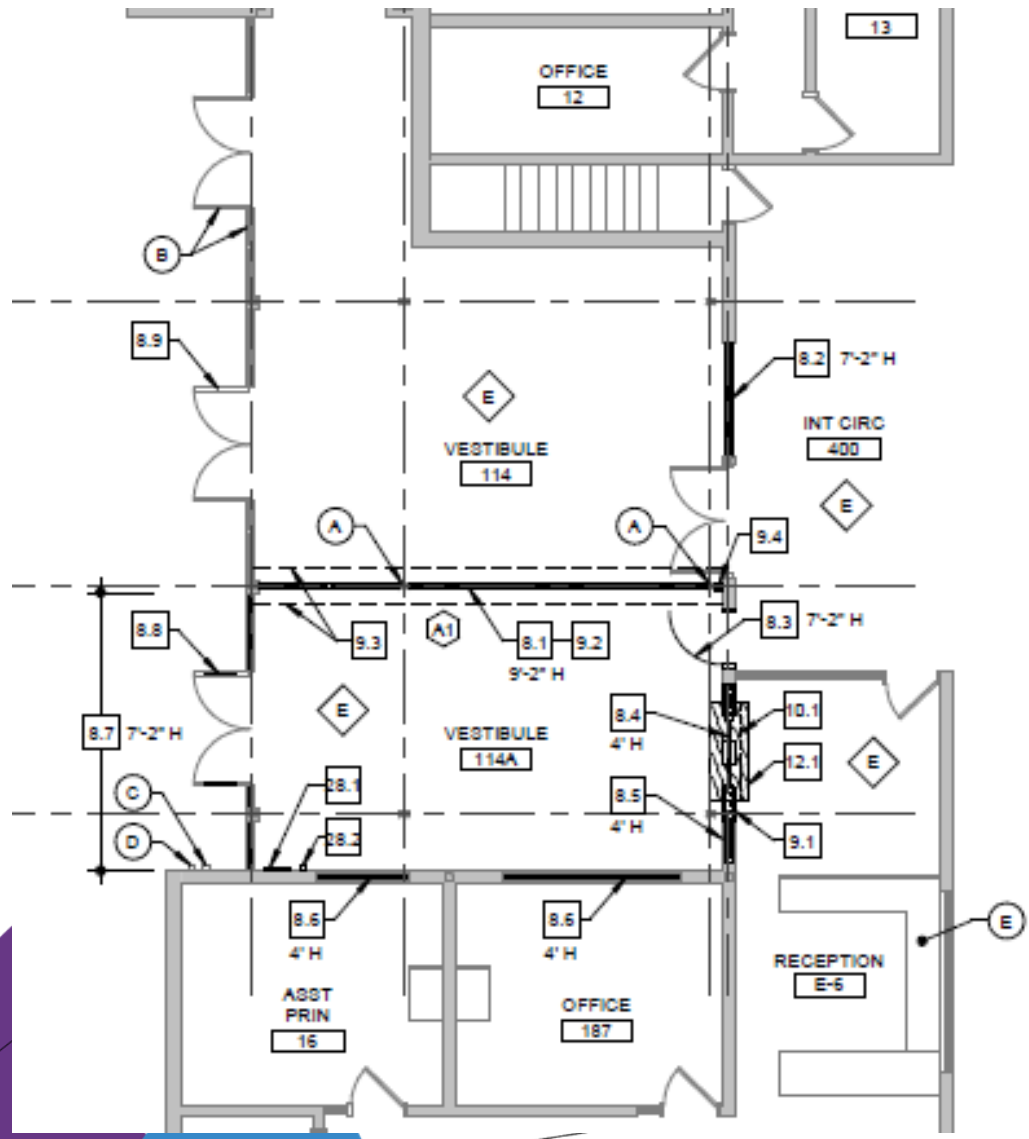
S Lakewood ES – Efficiency Future Ready Treasor HL – TBD

Bids 1/18/22



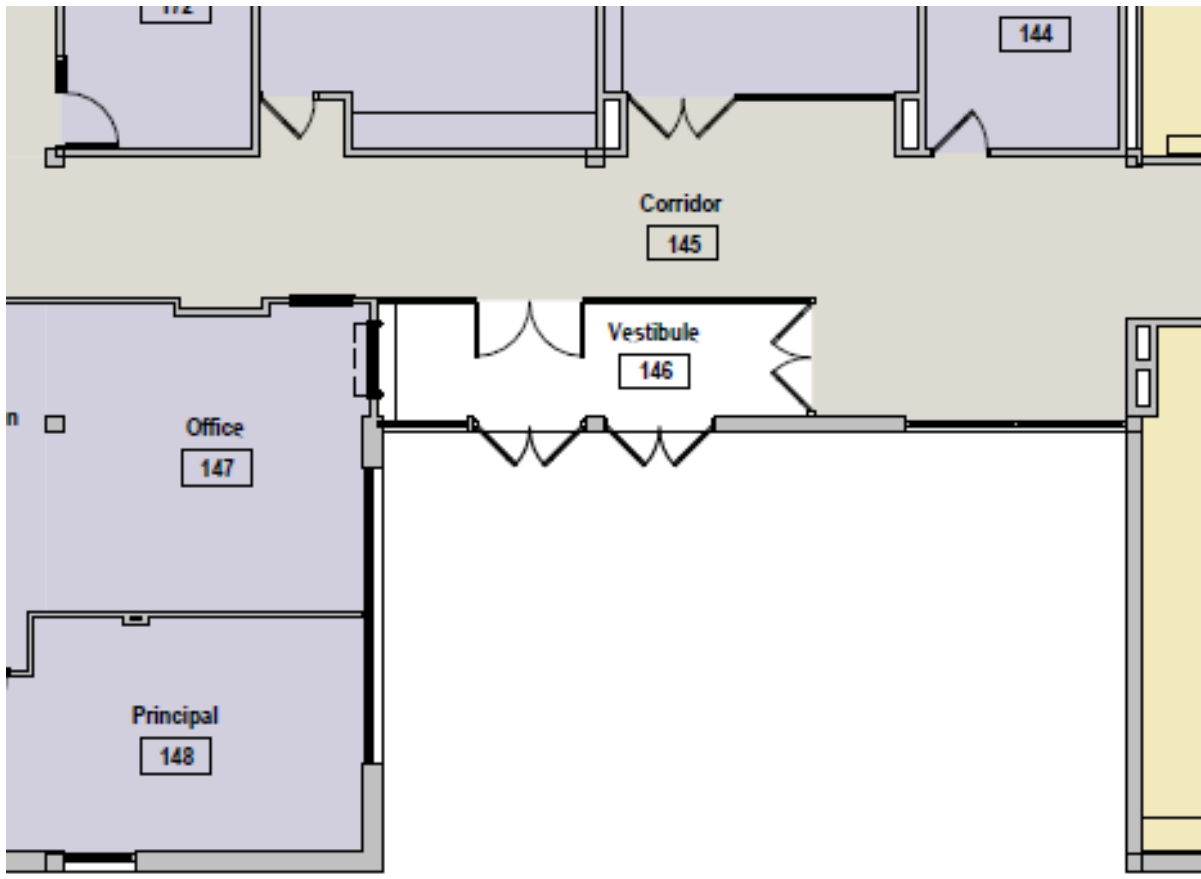
Oberon MS – Efficiency Future Ready Larson Incitti – TBD

CD



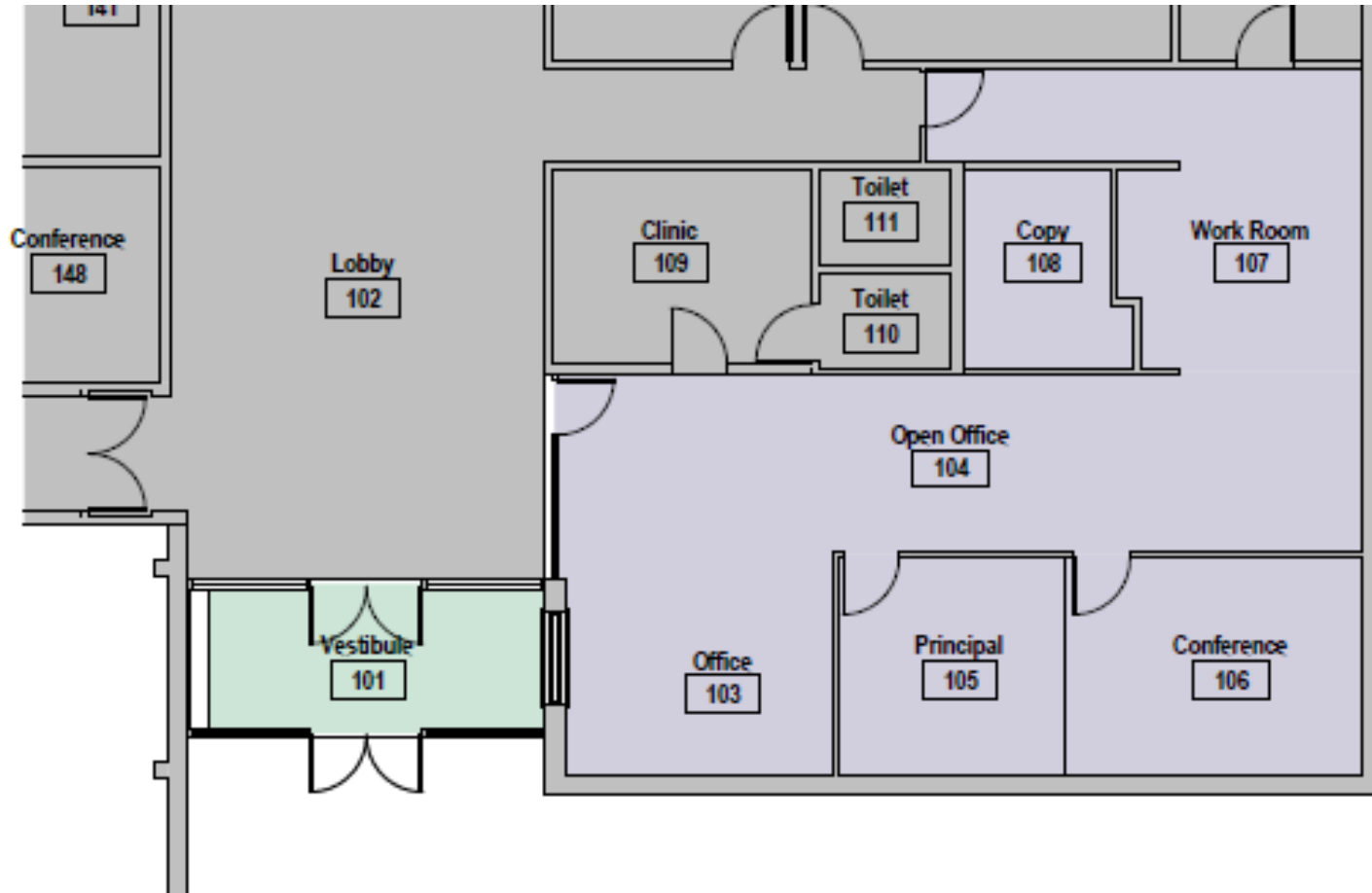
Swanson ES – Efficiency Future Ready H+M – TBD

CD



Van Arsdale ES – Efficiency Future Ready H+M – TBD

CD



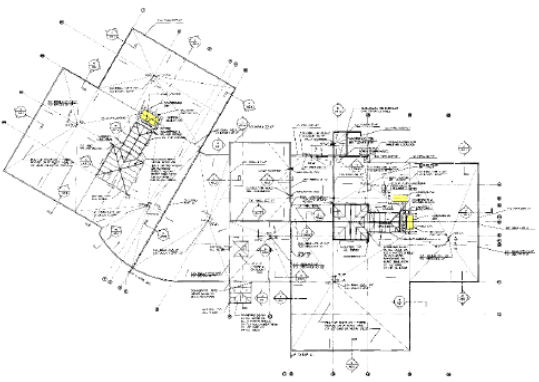
Connections – Efficiency Future Ready Studiotrope – TBD

SD

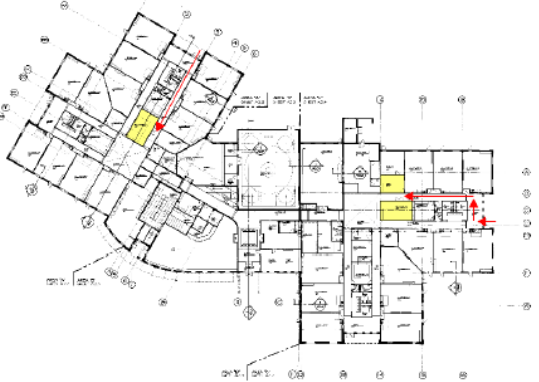


DW Mechanical 2023
 West Woods ES (3-condensers, 3 –AHU's),
 Bradford South (3-RTU's, Controls),
 Sobesky (2-boilers), South Lakewood (4 RTU's)
 Columbine – CMGC Himmelman

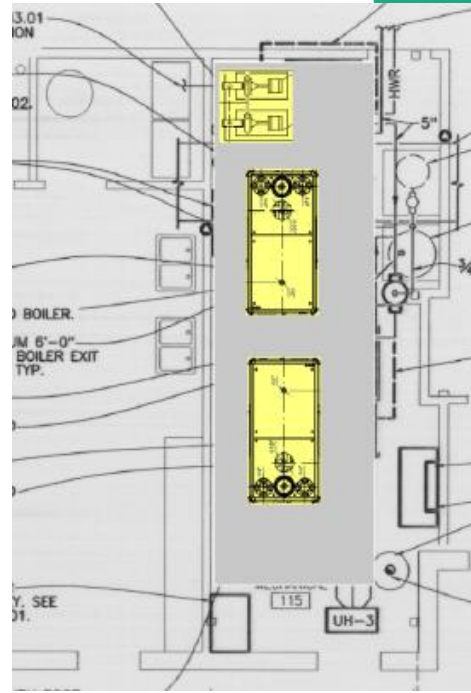
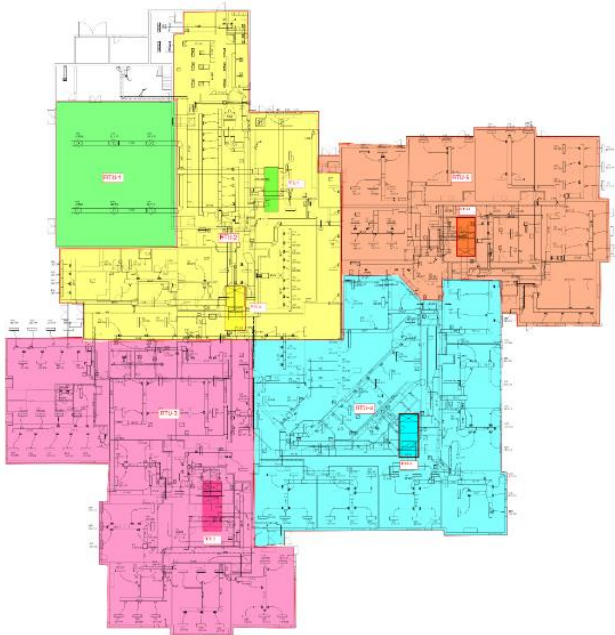
CD
 CMGC RFP
 Bassett,
 Bryan, GTC,
 Himmelman,
 Jcor



ACCU locations

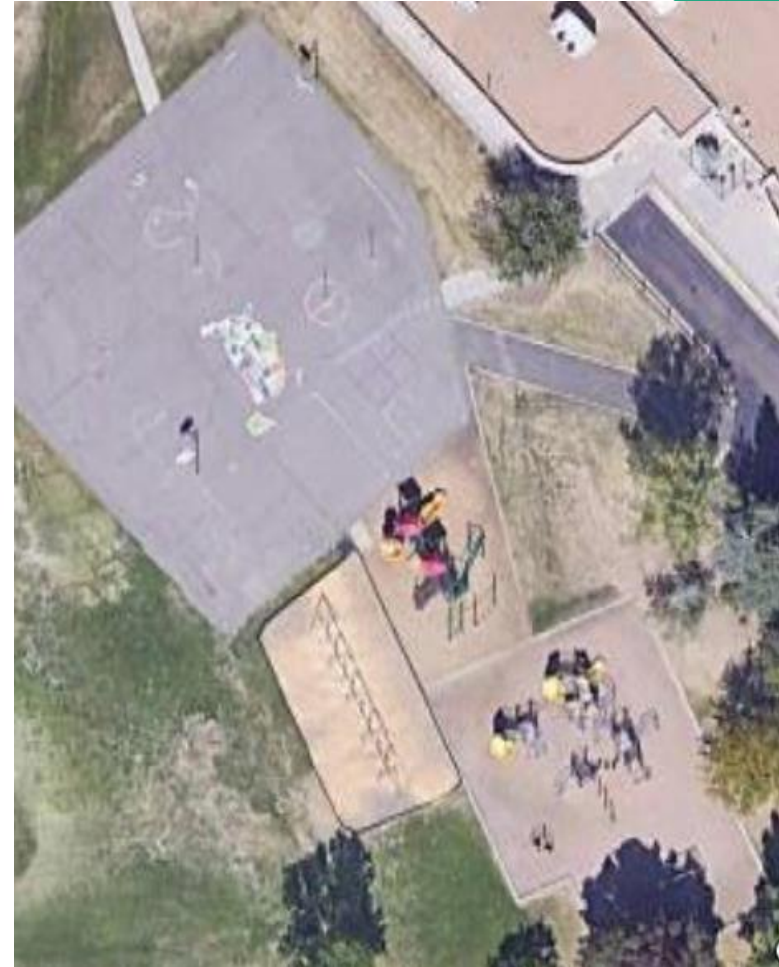
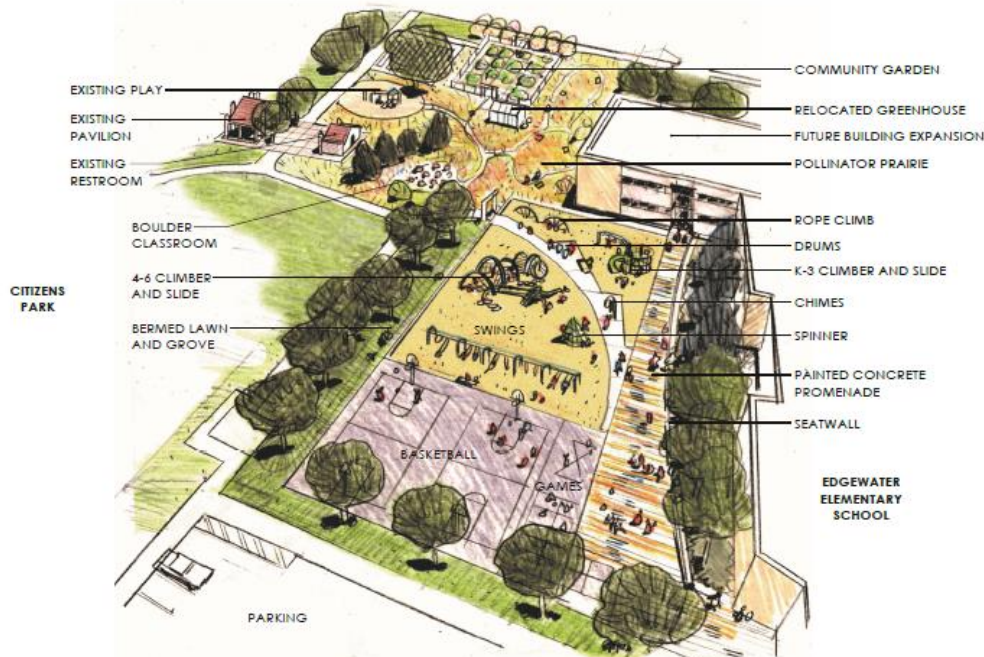


Proposed routing of new AHUs into school.

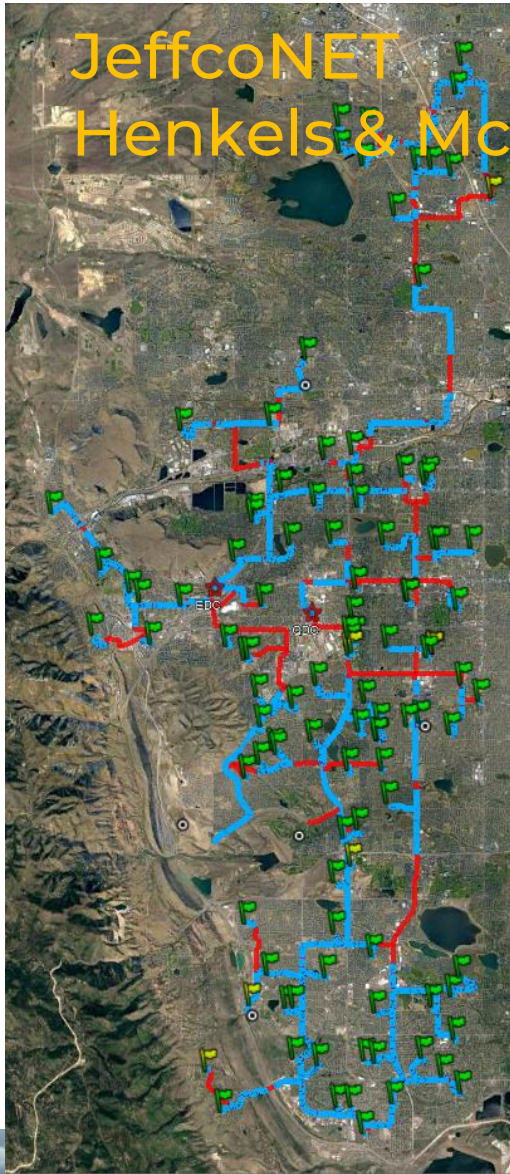


DW Playground 2023 Edgewater ES, Hutchinson ES

Design Concepts – TBD



JeffcoNET Henkels & McCoy



Project Information

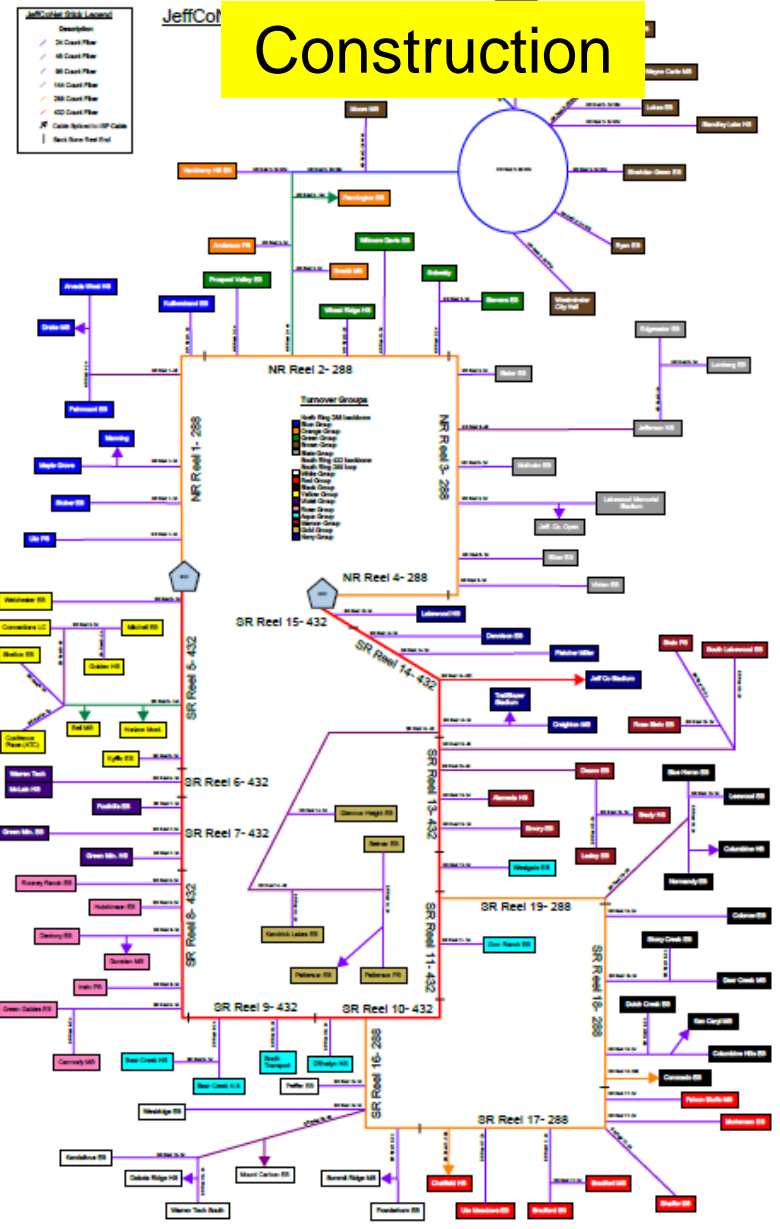
Project Start
April 29, 2020

Total Miles of conduit
to be bored 114

Miles installed
101 (89%)

North Backbone turnover
To schools Jan 2023

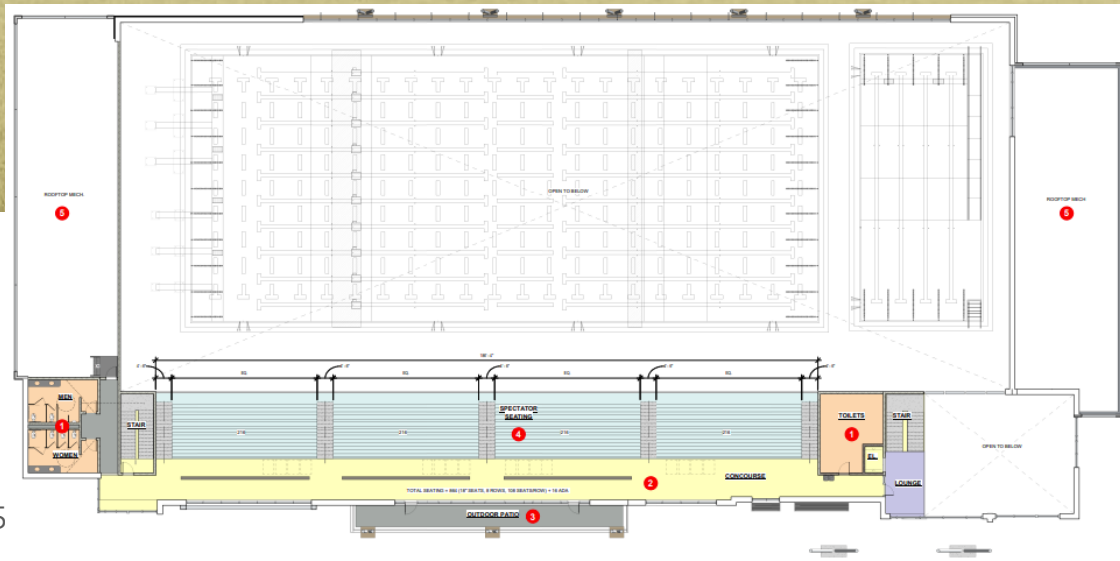
South Backbone turnover
To schools Sept 2023



Meyers Pool

City of Arvada / Jeffco / Apex
OLC Designs – Saunders CMGC

Construction



2024 Efficiency Future Ready Projects

Location	Description
West Lakewood	New School Morrison
Fairmont	Efficiency & Future Ready
West Woods	Efficiency & Future Ready
Meiklejohn	Efficiency & Future Ready
Normandy	Efficiency & Future Ready
Leawood	Efficiency & Future Ready
Leyden Rock	New School Golden
McLain High School	Efficiency & Future Ready
Rooney Ranch	Efficiency & Future Ready
Bradford North	Efficiency & Future Ready
Bradford South	Efficiency & Future Ready
Free Horizon	Efficiency & Future Ready

Plus FF&E Projects

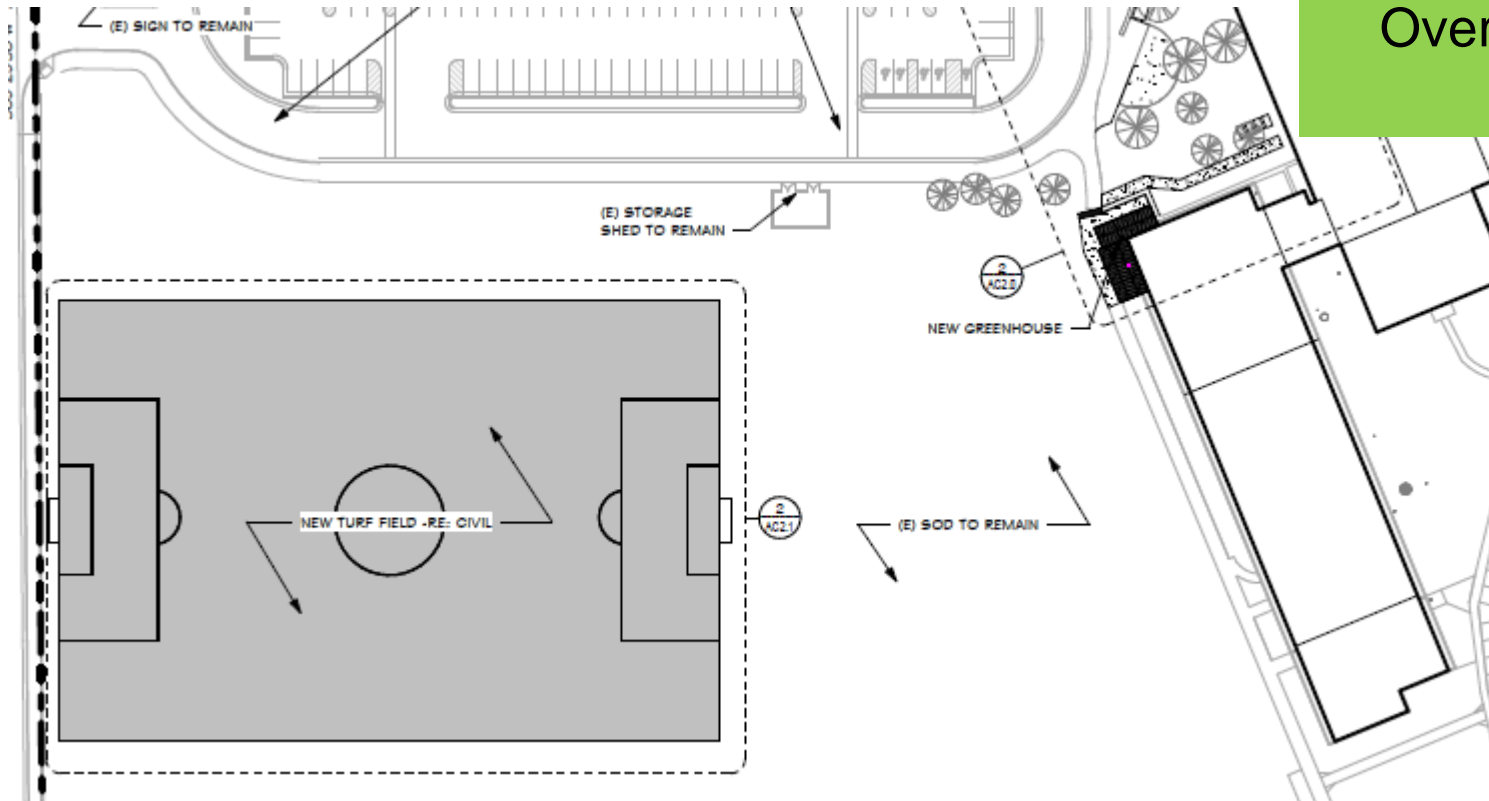
2023 Miscellaneous Projects

Turf Field Replacement Wheat Ridge HS Eidos – GTC

Bid 11/18/22
\$688,170

Budget \$550,000

\$138,170
Over Budget



DW FA Upgrades – D'Evelyn & Pomona TLH Fire – Weifield Group

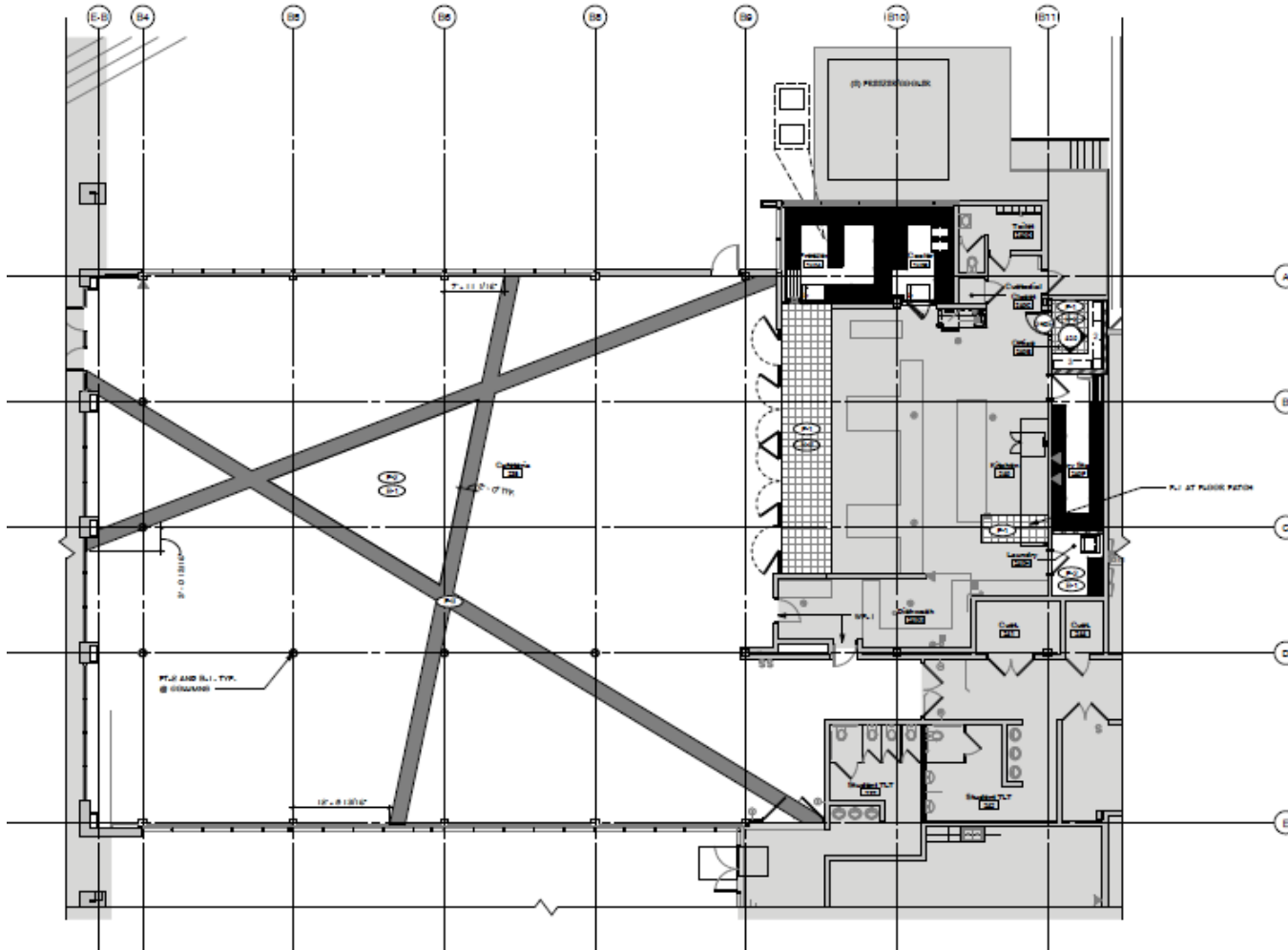


Bid 12/13/22
\$1,178,353

Estimate
\$1,721,000

Below
Estimate
\$542,647

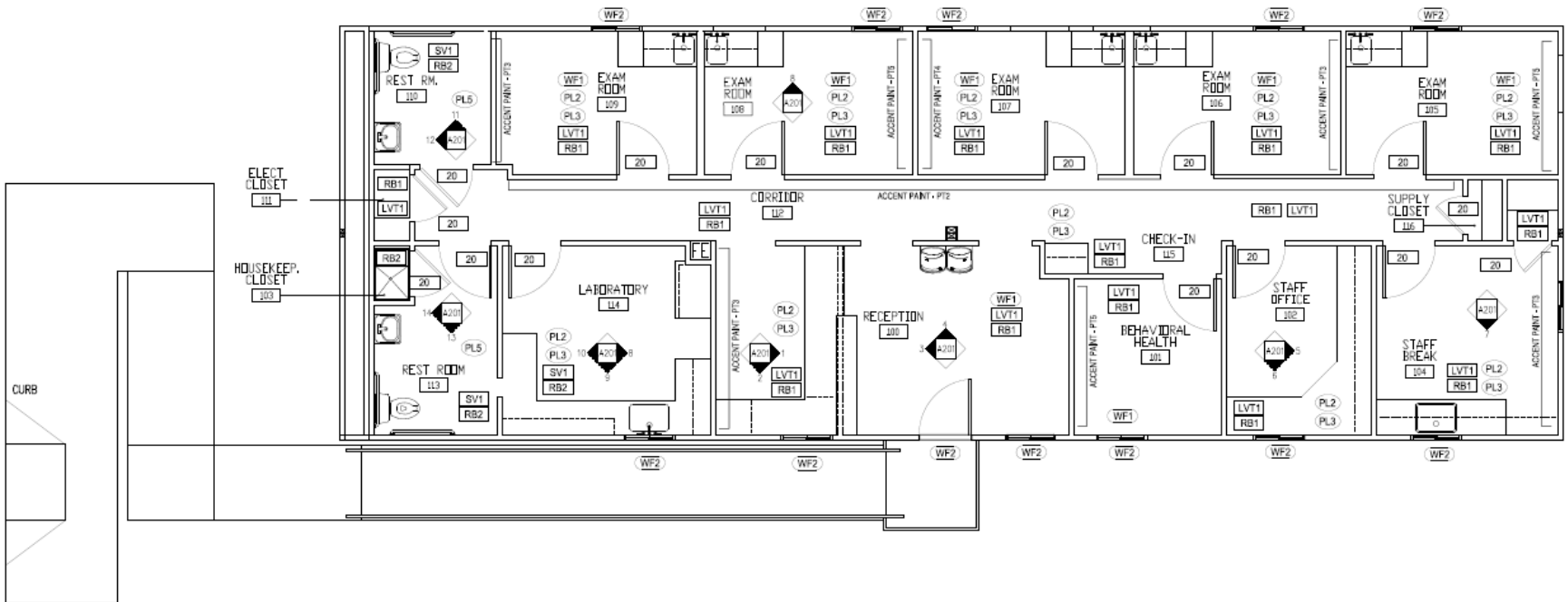
Kitchen Renovation Alameda International Jr/Sr High Eidos – TBD



Stride Clinic @ Alameda International Jr/Sr High

Jordin – TBD

SD

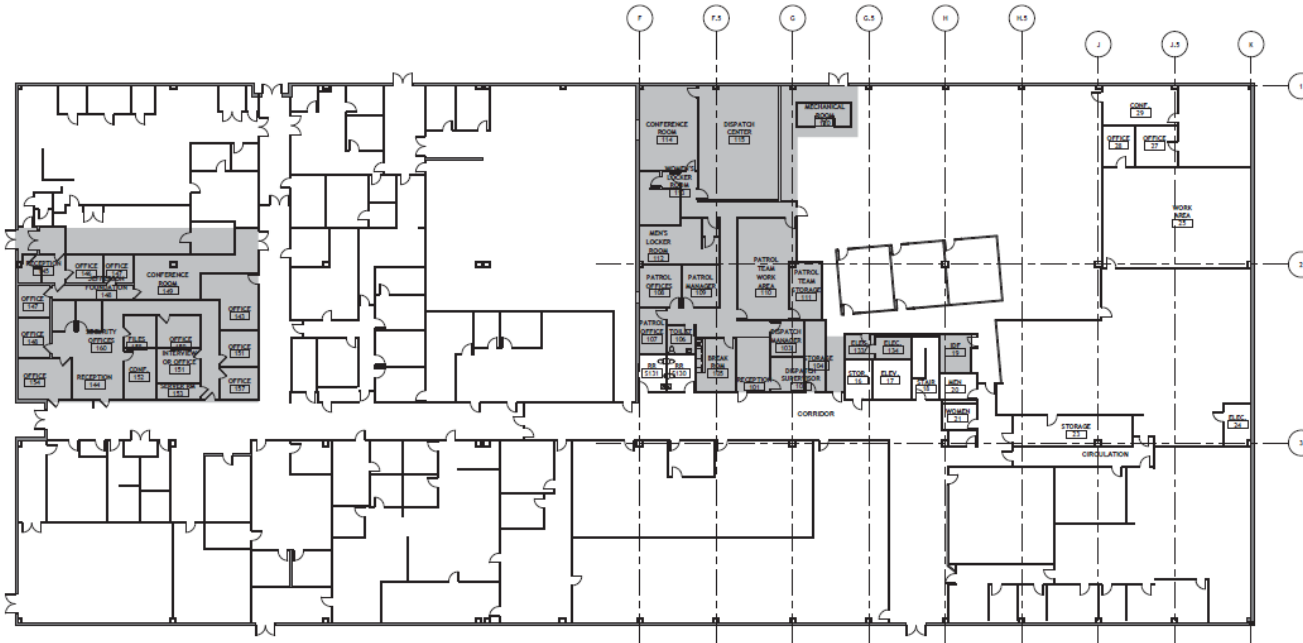


Security Office Renovation – Building 1

HCM – CMGC WE O’Neal

DD

CMGC RFP
WE O’neal,
Mccauley,
Fransen
Pittman,
Crossland



Ackerman – TBD

- Replace Direct Burial electrical lines at the 6th & Kipling Stadium Lighting
- Replace the existing Mercury Vapor lights at Trailblazer Stadium with LED
- Replace parking lot lighting with LED and add exterior security cameras at the Ed Center



2023 Policy Projects

Capital Investments for Thriving Schools - BOE Jun 08, 2022

Healthy & Equitable Start Times - BOE Mar 03, 2022

Regional Opportunities for Thriving Schools – BOE Nov 10, 2022

Program Verification & Feasibility Study – DLR Group

Fletcher Miller Special School

BOE Jun 08, 2022 - Special Meeting-Study/Dialogue Session
Capital Investments for Thriving Schools

Study Complete

Programming

Building Program Summary

Test fits will be based upon a 77,014 GSF program composed of small learning communities (suites of spaces including classrooms and other flexible learning spaces) for each cohort. This space program is based upon an enrollment of 100 students, with capacity to flex up to 115, if future staffing supports an increased enrollment. The spaces outlined for the future Fletcher Miller School are sized to accommodate adequate space for collaborative learning, specialized instruction, family and community connections, and specialized storage requirements. Additionally, to support the mobility requirements of this campus, spaces and grossing factors have been sized to either meet or exceed federally mandated American with Disabilities Act (ADA) required clearances.

Throughout each of the DAG meetings, the importance of indoor play space was discussed. These areas may be built into the presented program in a number of ways including within the dining/collaboration spaces within each of the learning communities. Therefore, it has not been included as additional square footage within the program.

PROGRAMMING



PROGRAM SUMMARY

Admin Area:	3,960 SF
Pre-K Learning:	4,925 SF
K-12 Learning:	13,590 SF
Lighthouse Learning:	5,070 SF
Jeffco Transition:	3,370 SF
Vocational:	1,600 SF
Library/Media:	3,300 SF
Food Service:	1,260 SF
Art/Music/P.E:	7,855 SF
Clinic:	1,190 SF
Therapeutic:	5,930 SF
Bldg. Support:	2,960 SF
TOTAL BUILDING AREA	77,014 SF

Healthy & Equitable Start Times

Start Times Next Steps

BOE Mar 03 2022

High School Athletic Field Lighting

Phase I - Fall 2023 and Phase II - Fall 2024

Engineer Ackerman – CMGC Himmelman

Address challenges related to athletics and activities.

SD
IGMP 2/1/22

CMGC RFP
Fransen Pittman,
Himmelman,
~~eci, Saunders,~~
~~Bryan, Turner~~



Alameda International High School
Arvada High School
Arvada West High School
Bear Creek High School
Chatfield High School
Columbine High School
Dakota Ridge Senior High School
D'Evelyn Junior/Senior High School
Golden High School
Green Mountain High School
Jefferson High School
Lakewood High School
Pomona High School
Ralston Valley Senior High School
Standley Lake High School
Wheat Ridge High School

School Closings & Consolidations

Resolution: Board of Education Decision on Staff
Recommendation Regional Opportunities for Thriving Schools
Thursday, November 10, 2022

CD's

Prospect Valley ES (8CR Addition) MOA & Phipps CMGC



GH Phipps to remain the contractor for the new scope.

37 Week Design & Construction
Schedule

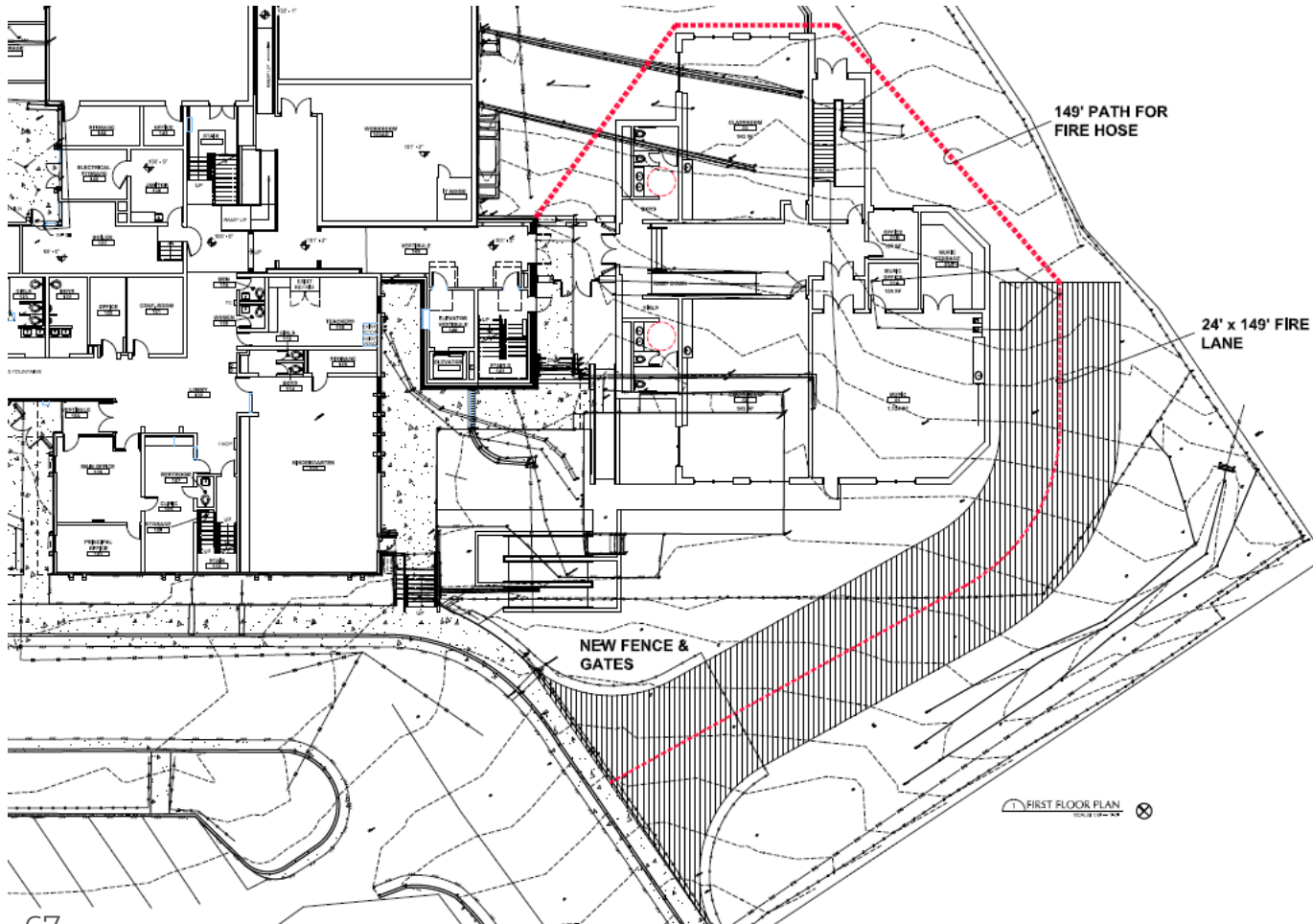
Effective July 1, 2023,
Kullerstrand Elementary
School will close and
combine its existing
attendance area with that
of Prospect Valley
Elementary School;

School Closings & Consolidations

Resolution: Board of Education Decision on Staff
Recommendation Regional Opportunities for Thriving Schools
Thursday, November 10, 2022

37 Week Design & Construction Schedule

Stober ES (5CR Addition + Kitchen) LOA & CMGC GTC



CD's
IGMP Feb

CMGC RFP
Bryan,
Crosslands,
FCI, **GTC**,
Himmelman,
PG Arnold

Effective July 1, 2023, New Classical Academy at Vivian will close and combine its existing attendance area with that of Stober Elementary School;

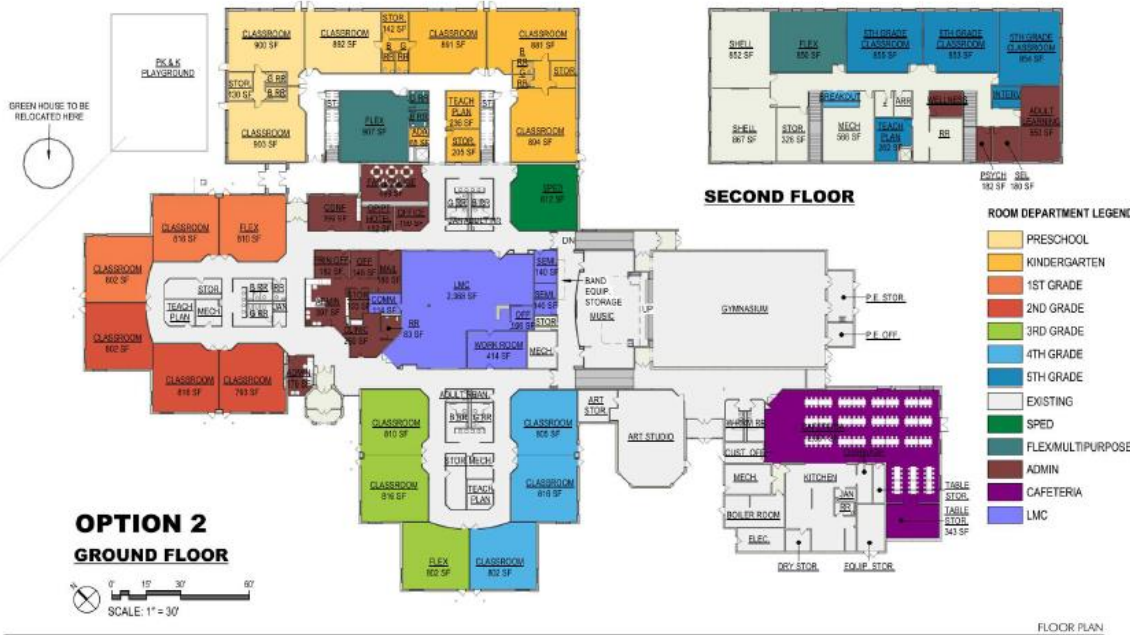


School Closings & Consolidations

Resolution: Board of Education Decision on Staff Recommendation Regional Opportunities for Thriving Schools
Thursday, November 10, 2022



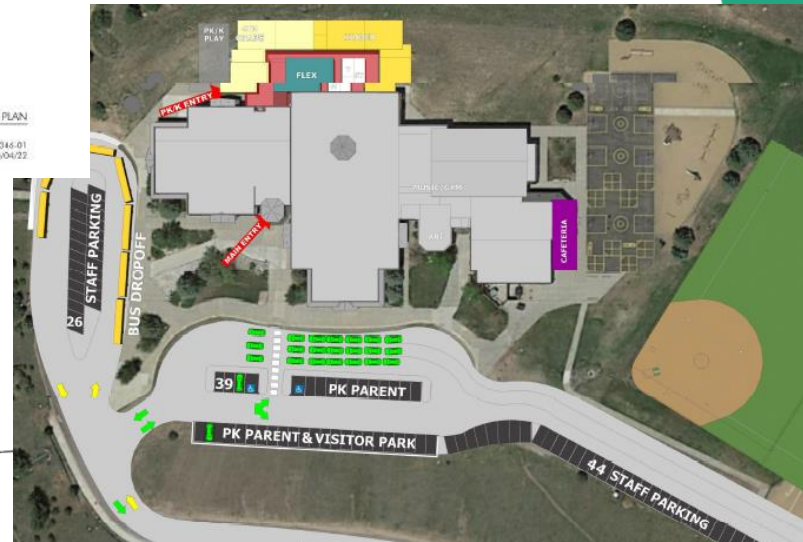
Bergen Valley ES - EUA & GC TBD



Effective July 1, 2024, Bergen Meadow K-2 will close and the grade configuration of Bergen Valley will be converted to a PK-5.



Bergen Valley Elementary School Renovation 02/14/21 10/04/22



School Closings & Consolidations

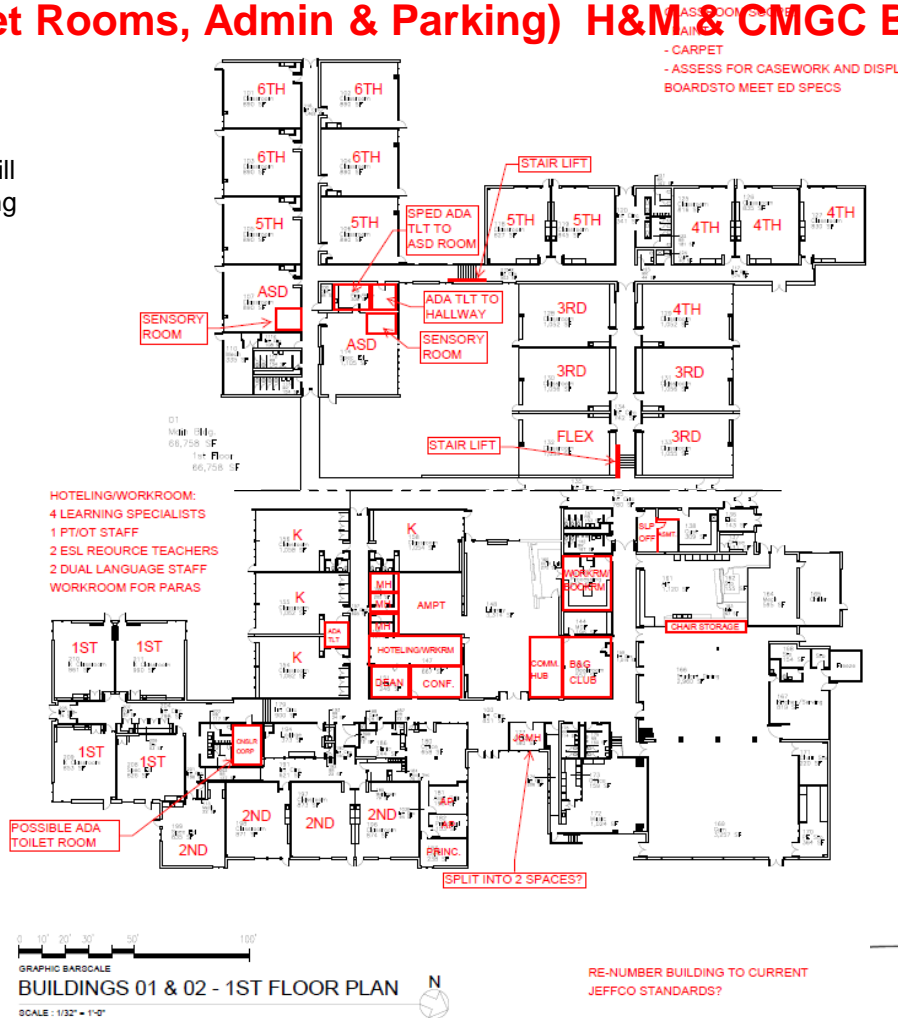
Resolution: Board of Education Decision on Staff
 Recommendation Regional Opportunities for Thriving Schools
 Thursday, November 10, 2022

Lasley ES

9 Week Construction Schedule

(ADA Lifts / Toilet Rooms, Admin & Parking) H&M & CMGC Bryan

A. Effective July 1, 2023, Emory Elementary School will close and combine its existing attendance area with that of Lasley Elementary School;



DD's
 CMGC RFP
 Bryan,
 Crosslands,
 FGI, GTC,
 Himmelman,
 PG Arnold

School Closings & Consolidations

Resolution: Board of Education Decision on Staff
Recommendation Regional Opportunities for Thriving Schools
Thursday, November 10, 2022

9 Week Construction Schedule

DW – Receiving Schools Upgrades – 15 Schools

Bundle 1 - A/E RB+B – CMGC TBD

Bundle 2 - A/E MOA – CMGC TBD

Pre-Design
CMGC RFP
Select 12/16
~~HPM, Bassett,~~
~~Crossland, PG~~
Arnold,
Saunders,
~~Haselden, FCI~~
~~, Palace, GE~~
Johnson

Bundle #1 – Foothills, Vanderhoof, Green Gables, Hutchinson, Maple Grove, Powderhorn, Ryan, Secret, Semper, Slater, Fremont, ~~Wheat Ridge~~, Standley Lake (hold), Adams, Meiklejohn

Bundle #2 - Sierra, Weber

Identify preschool options based on an articulated strategy for district-wide preschool as part of students' PK-12 educational experience;



School Closings & Consolidations

Resolution: Board of Education Decision on Staff Recommendation Regional Opportunities for Thriving Schools
 Thursday, November 10, 2022

Campbell ES (ECE Center) Eidos & GC TBD

9 Week Construction Schedule



Arvada West:
 Campbell =
 ECE Center
 2023-24*

Identify preschool options based on an articulated strategy for district-wide preschool as part of students' PK-12 educational experience;

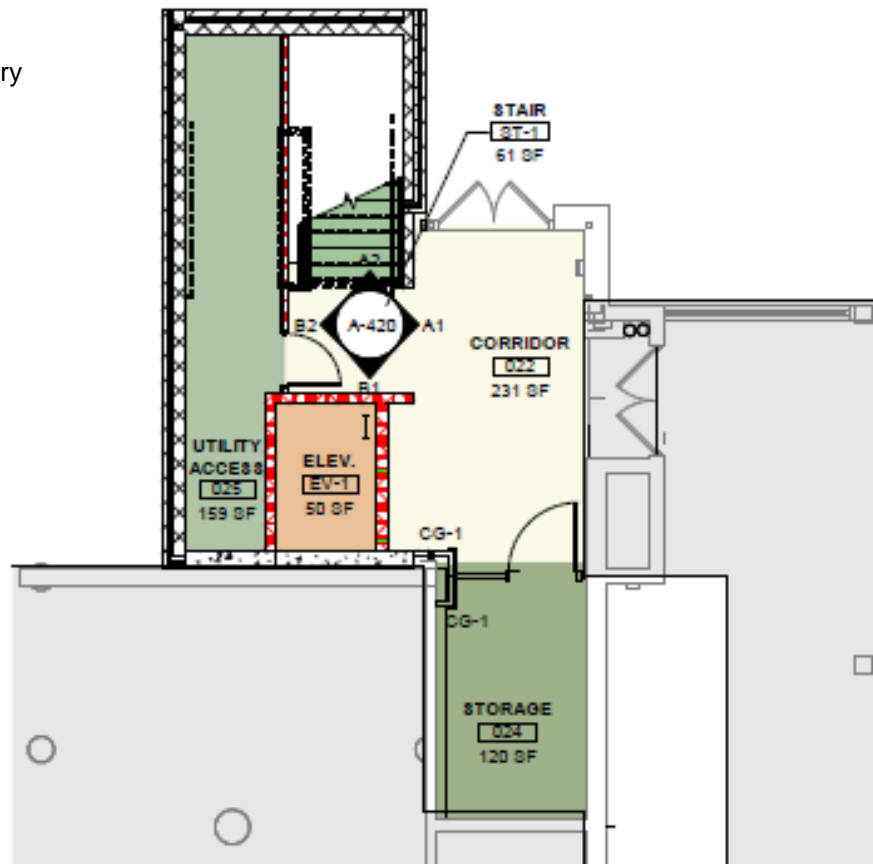
School Closings & Consolidations

Resolution: Board of Education Decision on Staff
Recommendation Regional Opportunities for Thriving Schools
Thursday, November 10, 2022

Stein ES (Elevator/Stair Addition) HCM & CMGC Himmelman

Alameda: Emory → Lasley (Emory
Center Program → Rose Stein)

37 Week Design & Construction
Schedule



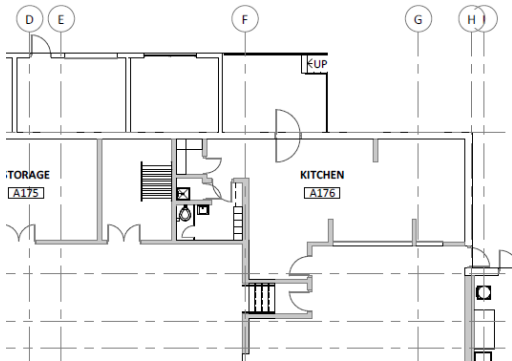
CD's
CMGC RFP
Bryan,
Crosslands,
FGI, GTC,
Himmelman,
PG Arnold

School Closings & Consolidations

Resolution: Board of Education Decision on Staff
Recommendation Regional Opportunities for Thriving Schools
Thursday, November 10, 2022

Receiving Schools Upgrades & Kitchen Improvements

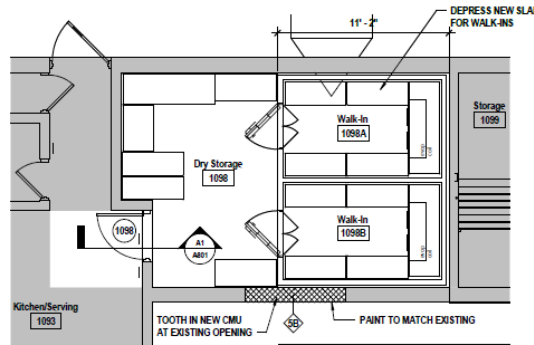
Lukas ES
Eidos - GC TBD



Kitchen Improvements

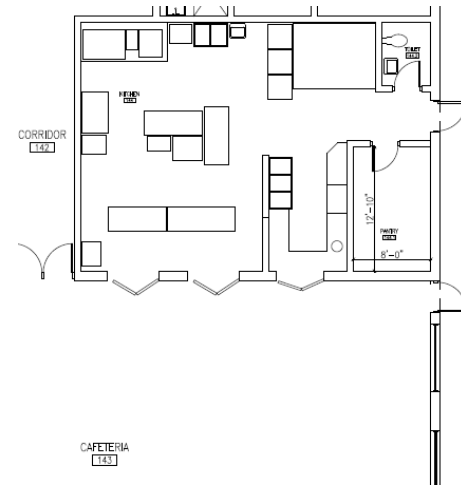
Kendallvue ES

H&M GC GTC
\$187,200



Kitchen Improvements

Fremont ES
(Wilmore Davis Re-design)
Eidos - GC TBD



Next Meeting 1/19/23